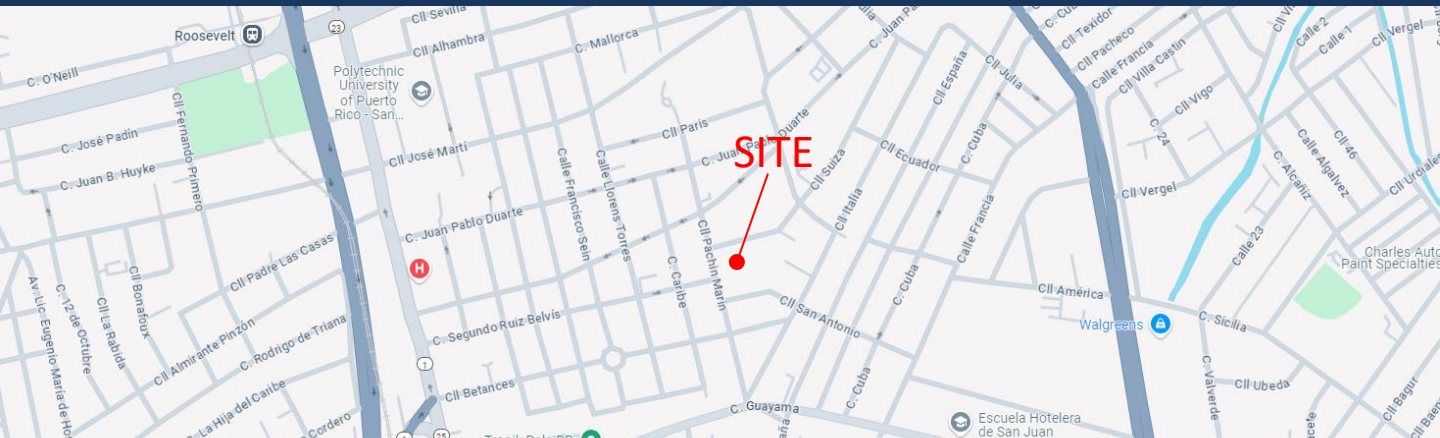




AMG, INC. * P.O. BOX 191117 * SAN JUAN, PUERTO RICO 00919-1117
Telephone: (787) 753-1212 Email: info@amgipr.com



Corner of Pachín Marín and Suiza Streets, FLORAL PARK DEVELOPMENT, Hato Rey, PUERTO RICO



A FORMER ELEMENTARY AND HIGH SCHOOL FACILITY WITH A BUILDING AREA OF APPROXIMATELY 106,000 SQUARE FEET, INCLUDING:

- CLASSROOMS
- DINNING AREAS
- CHAPEL
- BATHROOMS
- LABORATORIES
- KITCHEN/CAFETERIA
- GARAGE
- GYMNASIUM
- ADMINISTRATION OFFICE
- BASEMENT WORKSHOP
- UTILITY ROOMS
- PARKING

GPS COORDINATES: 18.419983
-66.050316

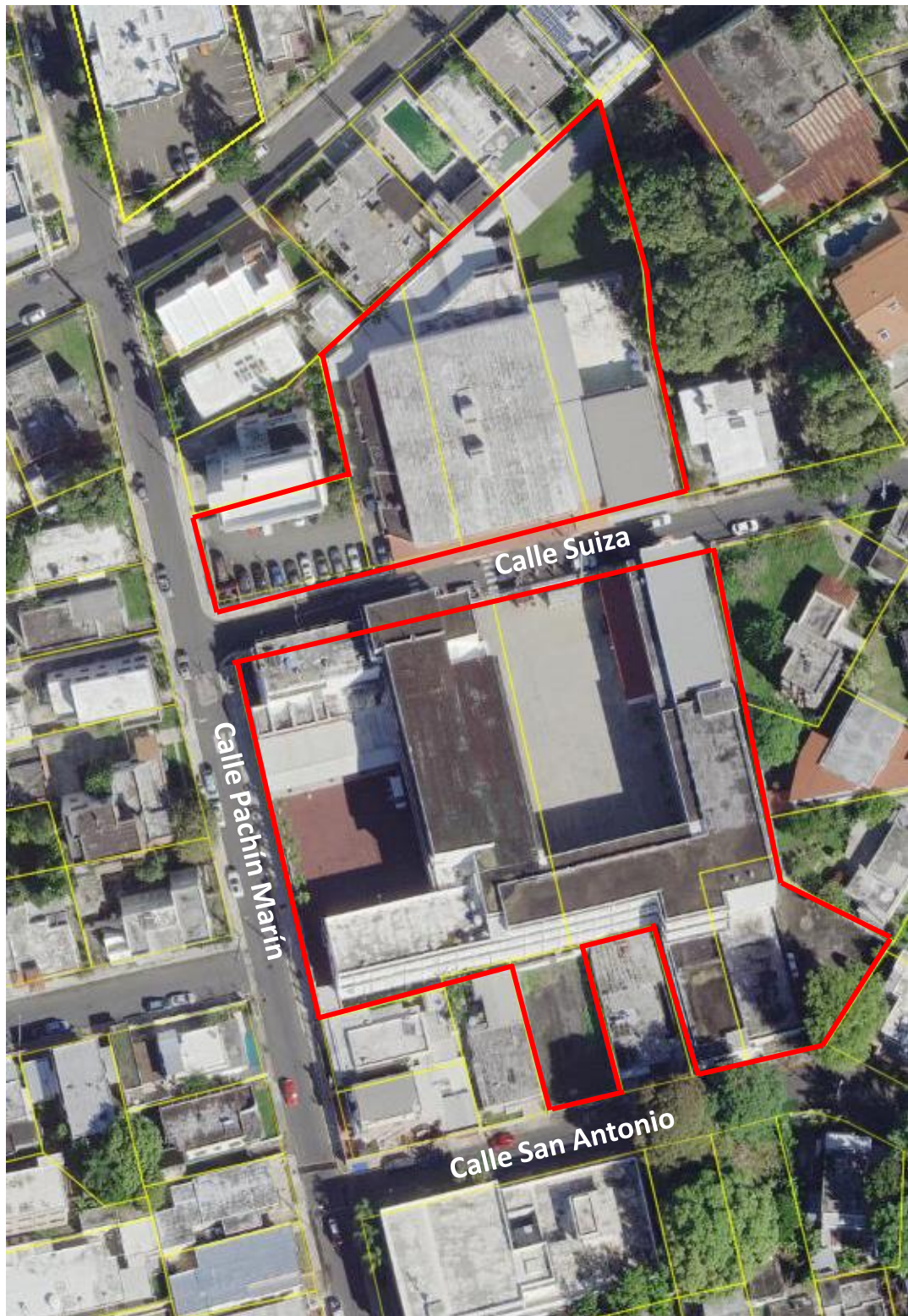
CLASSROOMS/LABS
OFFICES: +/- 38

PARKING: +/- 115

LAND AREA: APPROXIMATELY
2.8 CUERDAS/2.7 ACRES

NET RENTAL: TO BE DISCUSSED

Aerial Overview



FIRST FLOOR

For Illustration Purpose Only

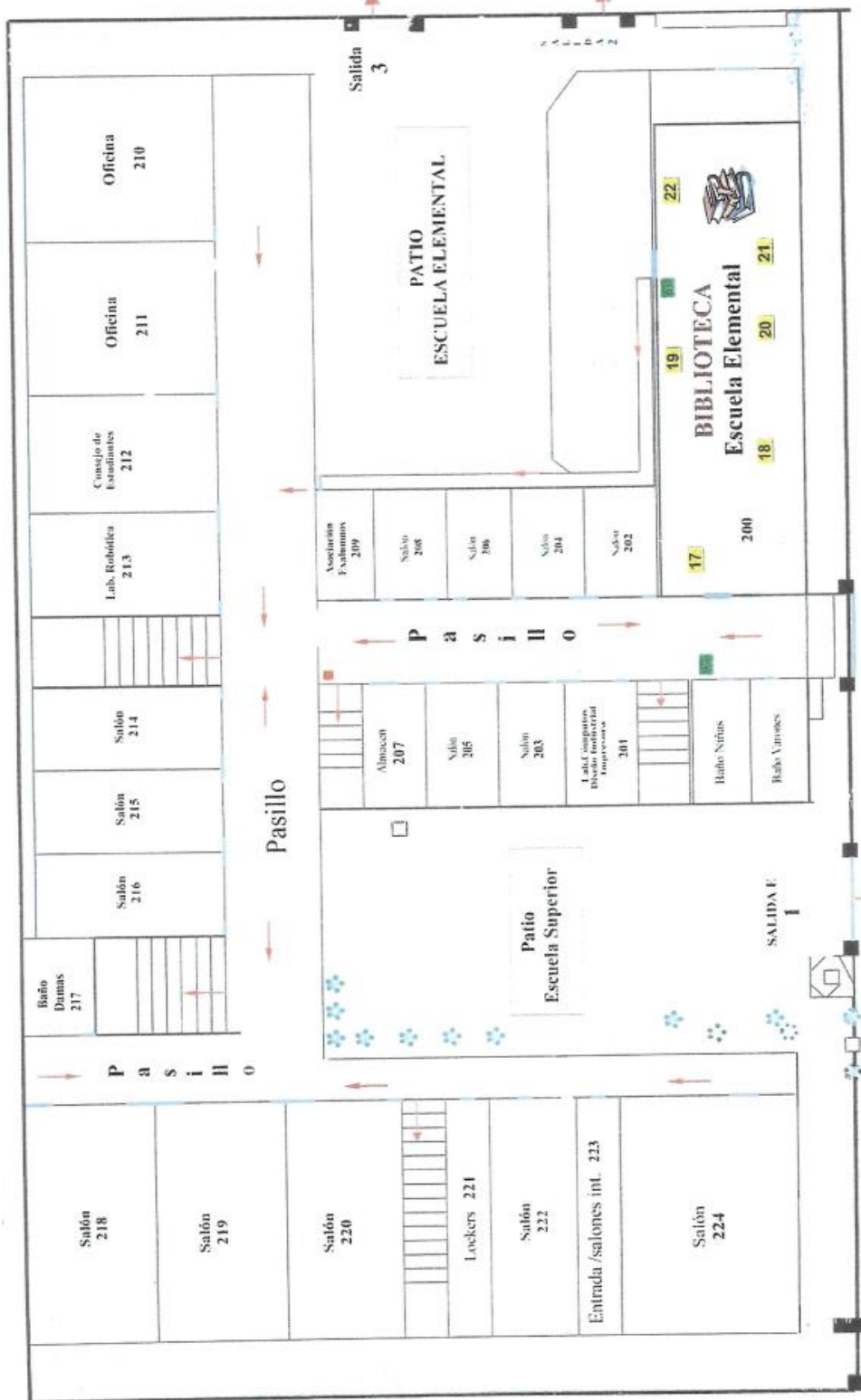
Not To Scale



SECOND FLOOR

For Illustration Purpose Only

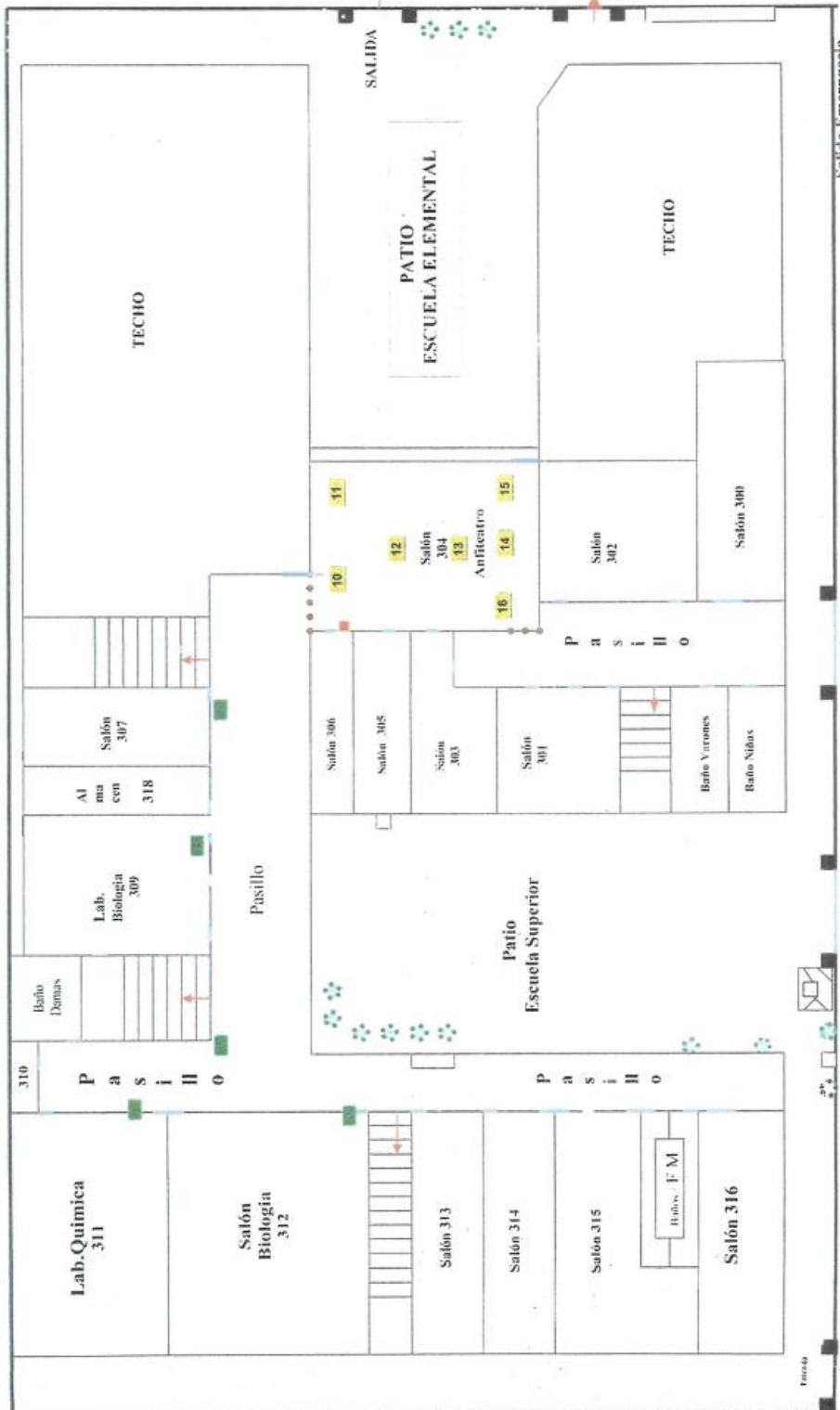
Not To Scale



THIRD FLOOR

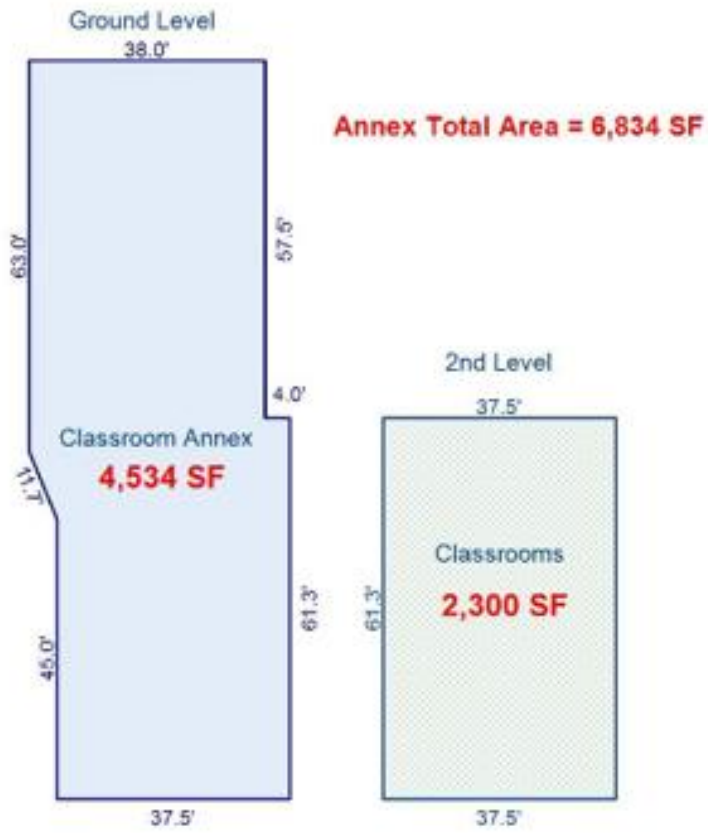
For Illustration Purpose Only

Not To Scale



For Illustration Purpose Only

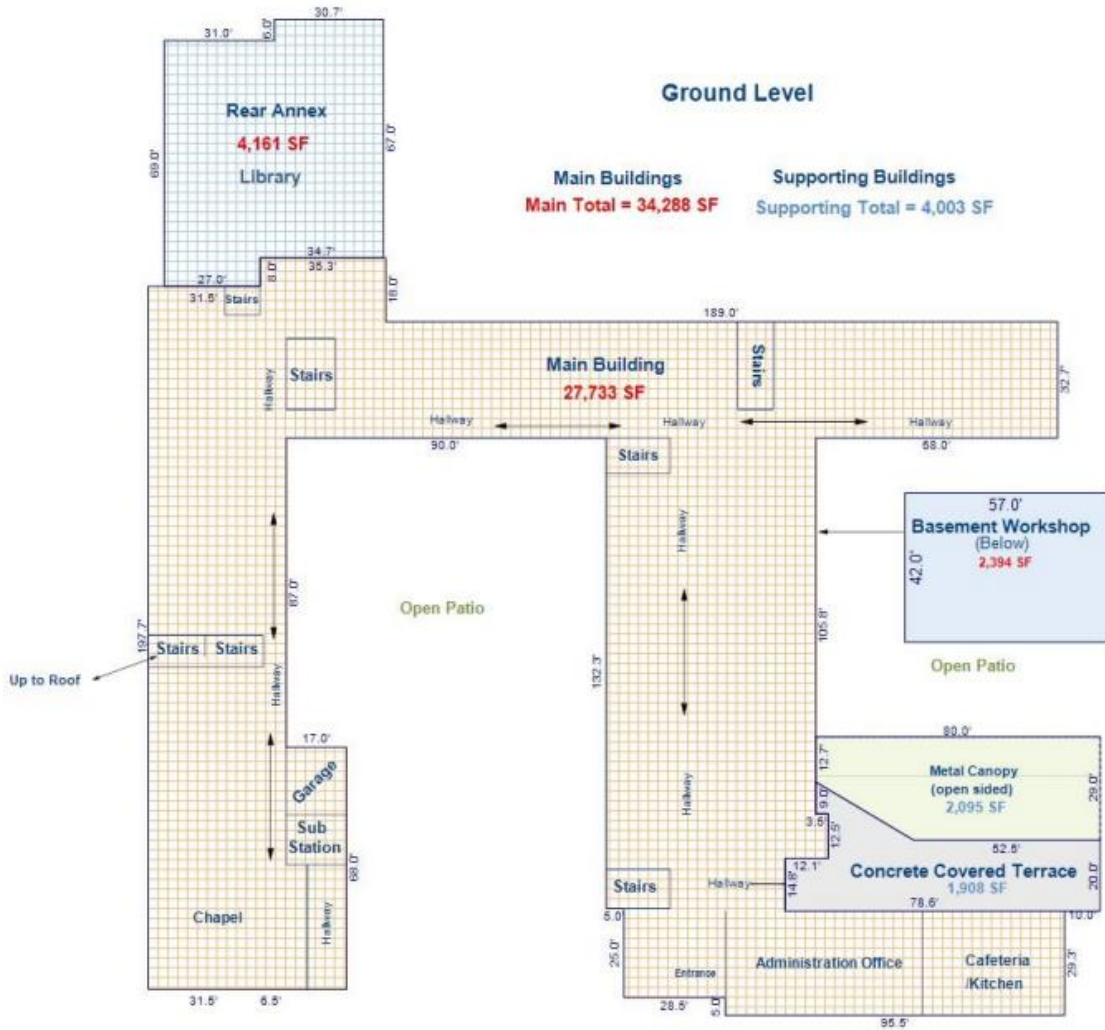
Not To Scale



For Illustration Purpose Only

Not To Scale

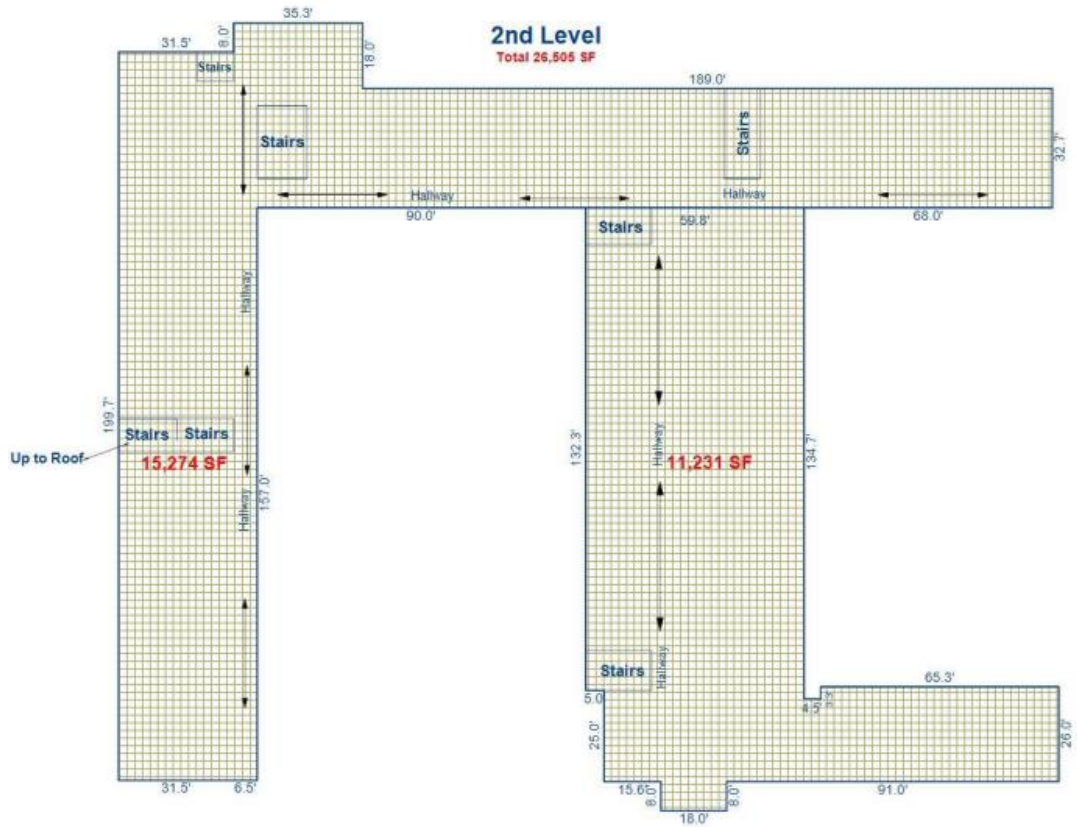
Main Building Ground and Basement Levels Sketch



For Illustration Purpose Only

Not To Scale

Main Building Second Level Sketch



For Illustration Purpose Only

Not To Scale

Main Building Third Level Sketch

