

GENERAL SITE PLAN- SANITARY, PROCESS SEWER & PROCESS SEWER SYSTEMS  
NOT TO SCALE

SYL.	DATE	REVISION	BY	APPROV.	SYL.	DATE	REVISION	BY	APPROV.
1	05/02/95	GENERAL REVISION	E.R.M.	J.M.	B	06/04/02	UP DATED	A.C.	J.VARGAS
2	08/16/95	GENERAL REVISION	E.R.M.	J.M.	A	08/23/02	MICS. UPDATE TO INCLUDE NEW PARKING LOT EXPANSION	F.M.	J.VARGAS
3	09/12/95	GENERAL REVISION	E.R.M.	J.M.	B	08/08/03	GENERAL REVISION	I.SS	J.R./J.H.
4	13/4/98	GENERAL REVISION	I.F.	J.M.	C		GENERAL REVISION	F.M.	D. RIVERA
5	6/8/00	UPDATE SANITARY LINE BLDG. 500	E.R.M.	N.MILLAN	D	07NOV.05	ADDED INTEGRITY TEST SEWER IDENTIFICATION	E.R.	
6	8/15/00	REVISION I	I.M.F.	J.M.	E	06/22/10	ISSUED FOR DEMOLITION PROJECT		
7	8/25/01	REVISION II	I.M.F.	J.M.					

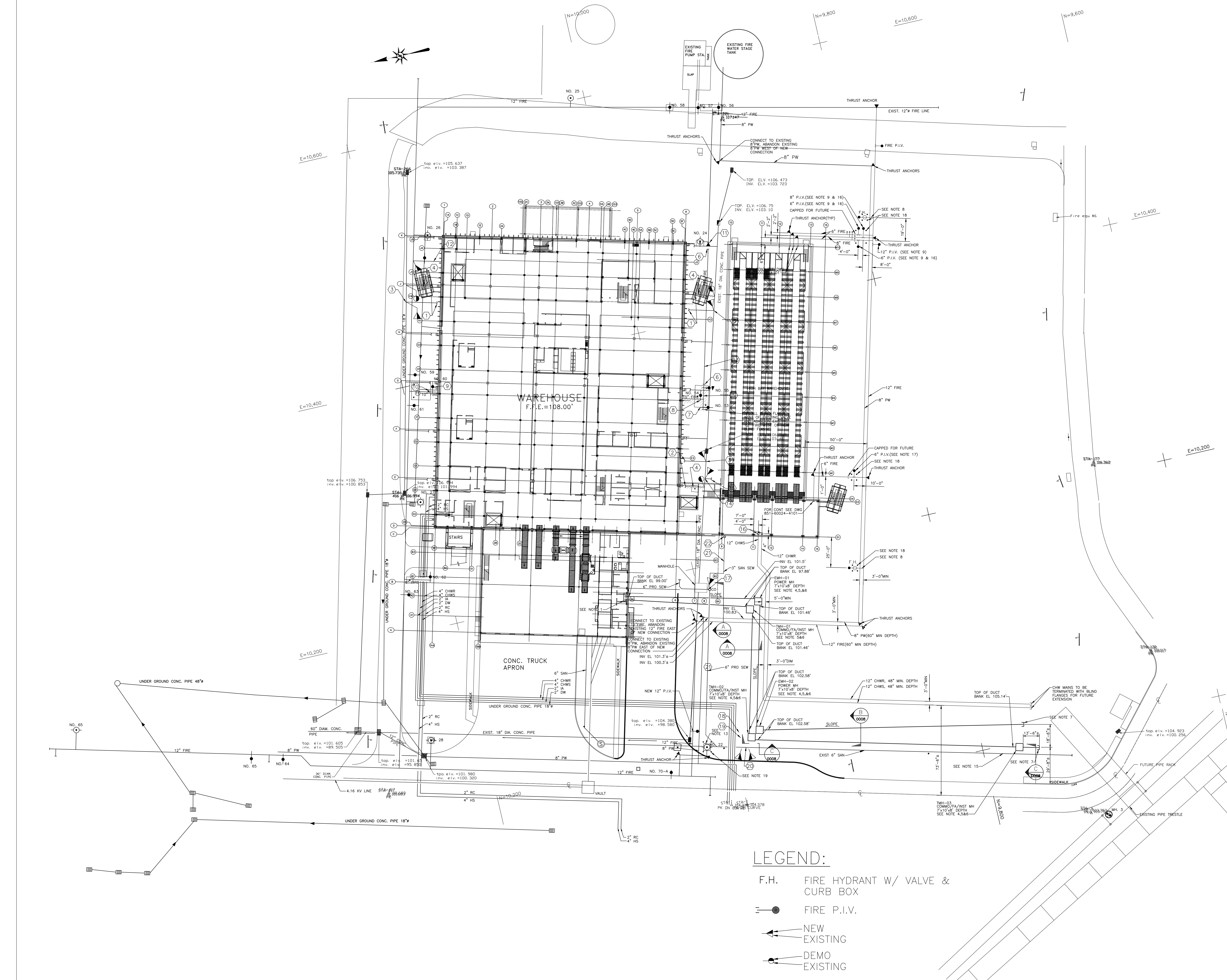
**LEGAL NOTICE**  
 This drawing is property of Pfizer Pharmaceutical LLC - Arecibo. Unless expressly stated otherwise, this drawing is confidential. It is intended for the use of the Pfizer personnel or authorized personnel only. Any disclosure or copying of the content of this drawing without authorization is prohibited. If you have access to this drawing without authorization may be unlawful.

<b>FILE NAME:</b> SITEZEWE-REV-D.DWG	<b>SCALE:</b> NONE	<b>DATE DRAWN:</b> 3-4-98
<b>LAST UPDATE:</b> JUNE 22, 2010	<b>DRAWN BY:</b> EULIEZER ROSARIO	<b>Pfizer PROJECT NO.:</b>
<small>medicines - designed for health. produced with care</small>	<b>CHECKED BY:</b> JOSE MARTINEZ	<b>DATE:</b> MARCH 1998
	<b>APPROVED BY:</b> JOSE MARTINEZ	<b>DATE:</b> MARCH 1998



**TITLE:**  
 GENERAL SITE PLAN - SANITARY, PROCESS SEWERS & STORM SEWER FOR EHS SDCP, BMP  
**SANITARY AND PROCESS SEWERS SCHEMATIC LAYOUT**  
 Pfizer  
 SABANA HOYOS WARD, ARECIBO, PUERTO RICO

<b>Pfizer DRAWING NUMBER</b>		
<b>BLDG. NO.</b>	<b>PROJECT NO.</b>	<b>DRAWING SHT. NO.</b>
700	30020	3000D



- ### GENERAL NOTES:
- SEE SERVICES STUB-UP PARTIAL PLAN AND CONDUIT ENTRY AT EXISTING FOOTING DETAIL FOR CONDUIT ENTRY INTO EXISTING BUILDING.
  - SLOPE OF DUCT BANK = 1"/100'
  - NOT USED
  - SEE POWER AND COMMUNICATIONS MANHOLE PLANS AND SECTIONS FOR DETAILS.
  - SEE POWER AND COMMUNICATIONS MANHOLE GROUNDING PLANS FOR DETAILS.
  - ALL MANHOLES SHALL BE STEEL REINFORCED. DETAILS SHALL BE SUBMITTED TO THE ENGINEER FOR REVIEW PRIOR TO THEIR CONSTRUCTION.
  - PROVIDE COUPLING AND PLUG CONDUIT. MAKE PROVISIONS FOR FUTURE EXTENSION OF DUCT BANK.
  - PROVIDE NEW FIRE HYDRANT AND VALVE WITH CURB BOX. LOCATION TO BE CONFIRMED LATER IN ACCORDANCE WITH FINAL BUILDING LOCATION.
  - PROVIDE ONE 12" P.V., TWO 6" P.V.'S, ONE 8" P.V., THRUST ANCHORS, AND END CAP FOR FUTURE BUILDING 851 FIRE SERVICE.
  - CHILLED WATER PIPING CHWS & CHWR SHALL BE 350 PSI DUCTILE IRON AS PER SECTION 15300 WITH MANGA LUGS AND THRUST ANCHORS. CHILLED WATER LINES SHALL BE INSULATED WITH 2" CELLULAR GLASS WITH PIT WRAP IN ACCORDANCE WITH SECTION 15252.03.
  - 8" P.W. LINE SHALL BE DUCTILE IRON IN ACCORDANCE WITH SECTION 15300.
  - EXISTING STORM SEWER REFERENCE LINE HAVE BEEN TURNED OFF. SEE DWG. 0005.
  - SEE DWG. 0004 FOR EXISTING FIRE HYDRANT RELOCATION. COORDINATE FIRE LINE LOCATION WITH PIPING AND FIELD ROUTE. VERIFY EXISTING PIPE LOCATIONS BEFORE EXCAVATION IS STARTED.
  - CONTRACTOR SHALL FIELD VERIFY FIRE LINE LOCATION & ELEVATION THROUGH FIELD EXCAVATION.
  - CONTRACTOR SHALL FIELD VERIFY LOCATING AND CONNECTION OF EXISTING 6" SEWER LINE AND CONNECTION TO MAIN.
  - BID PACKAGE NO 1 SHALL PROVIDE PIV'S. BID PACKAGE 2F PROVIDES ALL PIPING AND VALVING DOWN STREAM OF PIV TO BUILDING RISERS.
  - BID PACKAGE NO 1 SHALL PROVIDE 6" PIV, THRUST ANCHOR, AND END CAP. BID PACKAGE 2F WILL EXTEND LINE TO BUILDING RISERS.
  - PROVIDE 6" GUARD POSTS WITH CONCRETE FILL AND BASE.
  - RELOCATED OR NEW GUARD POST WITH CONCRETE FILL AND BASE.

- ### CONSTRUCTION NOTES:
- 6" STORM SEWER, FOR CONTINUATION SEE DWG 850-60024-3301.
  - 6" STORM SEWER, FOR CONTINUATION SEE DWG 850-60024-3302.
  - CONNECT NEW 6" LATERAL TO EXISTING 18" CONCRETE MAIN.
  - CONTRACTOR TO REMOVE AND DISPOSE OF EXISTING STORM SEWER LATERAL AS SHOWN CROSSHATCHED AND CAP AT 18" CONCRETE MAIN.
  - REMOVE AND DISCARD PIPING BETWEEN PIV 54 AND PHARMA BUILDING AND THE PIPING BETWEEN PIV'S 53, 54, AND 55.
  - PLACE PRESSURE PLUG IN 12" FIRE LINE.
  - REMOVE AND PALLETIZE FOR STORAGE PIV'S 53 AND 55.
  - REMOVE FROM SERVICE PIV 54 AND THAT PORTION OF THE FIRE PROTECTION SYSTEM SERVED BY IT. THIS INCLUDES THE REMOVAL OF ALL SPRINKLER PIPING, HANGERS, SUPPORTS AND SPRINKLER HEADS WITHIN THE EXISTING WAREHOUSE SERVED BY PIV 54. REFER TO DWGS M85-60024-4004 AND 4005 FOR MORE DETAIL. PALLETIZE FOR STORAGE PIV 54.
  - REMOVE FROM SERVICE PIV 60 AND THAT PORTION OF THE FIRE PROTECTION SYSTEM SERVED BY IT. THIS INCLUDES THE REMOVAL OF ALL SPRINKLER PIPING, HANGERS, SUPPORTS AND SPRINKLER HEADS WITHIN THE EXISTING WAREHOUSE SERVED BY PIV 60. REFER TO DWGS M85-60024-4004 AND 4005 FOR MORE DETAIL. REFER TO DWG 851-60024-4608 FOR RELOCATION OF PIV 60.
  - INSTALL BLIND FLANGE AFTER PIV 60 HAS BEEN REMOVED.
  - BLIND FLANGE AND THRUST ANCHOR.
  - FOR INSTALLATION DETAILS.
  - ABANDON 12" FIRE LINE BETWEEN PRESSURE PLUGS.
  - CUT 12" FIRE LINE JUST WEST OF HYDRANT 24 AND INSTALL CONNECT NEW 8" LATERAL TO EXISTING 18" CONCRETE MAIN.
  - NEW FIRE PROTECTION LINE. REFER TO DWG 851-60024-4608 850-60024-3302.
  - 12" CHWS AND CHWR UP 12" AFF. TERMINATE WITH BLIND FLANGE FOR FUTURE TIE-IN.
  - CONNECT 6" SINGLE WALL POLYPROPYLENE PIPING TO EXISTING MANHOLE.
  - PROVIDE 6"x6" MG OR DRESSER COUPLING OR FLANGE CONNECTION BETWEEN POLYPROPYLENE PIPE AND CAST IRON PIPE.
  - SLOPE BRANCH TO LINE UP TO 6" POLYPROPYLENE PIPING.
  - CUT IN NEW 6" WYE WITH MG OR DRESSER COUPLING WITH STAINLESS STEEL BOLTS.
  - 3" SANITARY SEWER RUN UNDERGROUND AND TIED INTO THE 6" SINGLE WALL PRO SEW PIPE BELOW THE CLEANOUT.
  - FOR CONTINUATION SEE DRAWING 851-60024-3101.

### LEGEND:

- F.H. FIRE HYDRANT W/ VALVE & CURB BOX
- FIRE P.I.V.
- NEW EXISTING
- DEMO EXISTING

SYM.	DATE	REVISION	BY	APPROV.	SYM.	DATE	REVISION	BY	APPROV.
1	5/26/98	ISSUED FOR BIDS	-	-	7	3/5/02	CONFORMED TO CONSTRUCTION DOCUMENTS	HTB	JCR
A	6/12/98	ADDENDUM No. 1							
2	9/21/98	ISSUED FOR COORDINATION OF PIV'S AND HYDRANTS	PRP	JCR					
3	2/25/99	CONFORMED TO CONSTRUCTION AS-BUILT FOR BID PACKAGE 1	PRP	JCR					
4	2/26/99	ISSUED FOR CHANGE ORDER REQUEST COR-2C-1	PRP	JCR					
5	1/9/01	ADDED 6" PROCESS SEWER LINE	PRP	JCR					
6	2/9/01	ADDED 3" SAN SEWER LINE	PRP	JCR					

FILE NAME:	SI-0010	SCALE:	1"=30'	DATE DRAWN:	-
LAST UPDATE:	3/5/02	DRAWN BY:	PHARMACIA & UPJOHN CORP., INC. PROJECT NO. 60024	CHECKED BY:	-
medline...designed for health...produced with care		APPROVED BY:	-	DATE:	-



TITLE: UNDERGROUND UTILITIES SITE PLAN

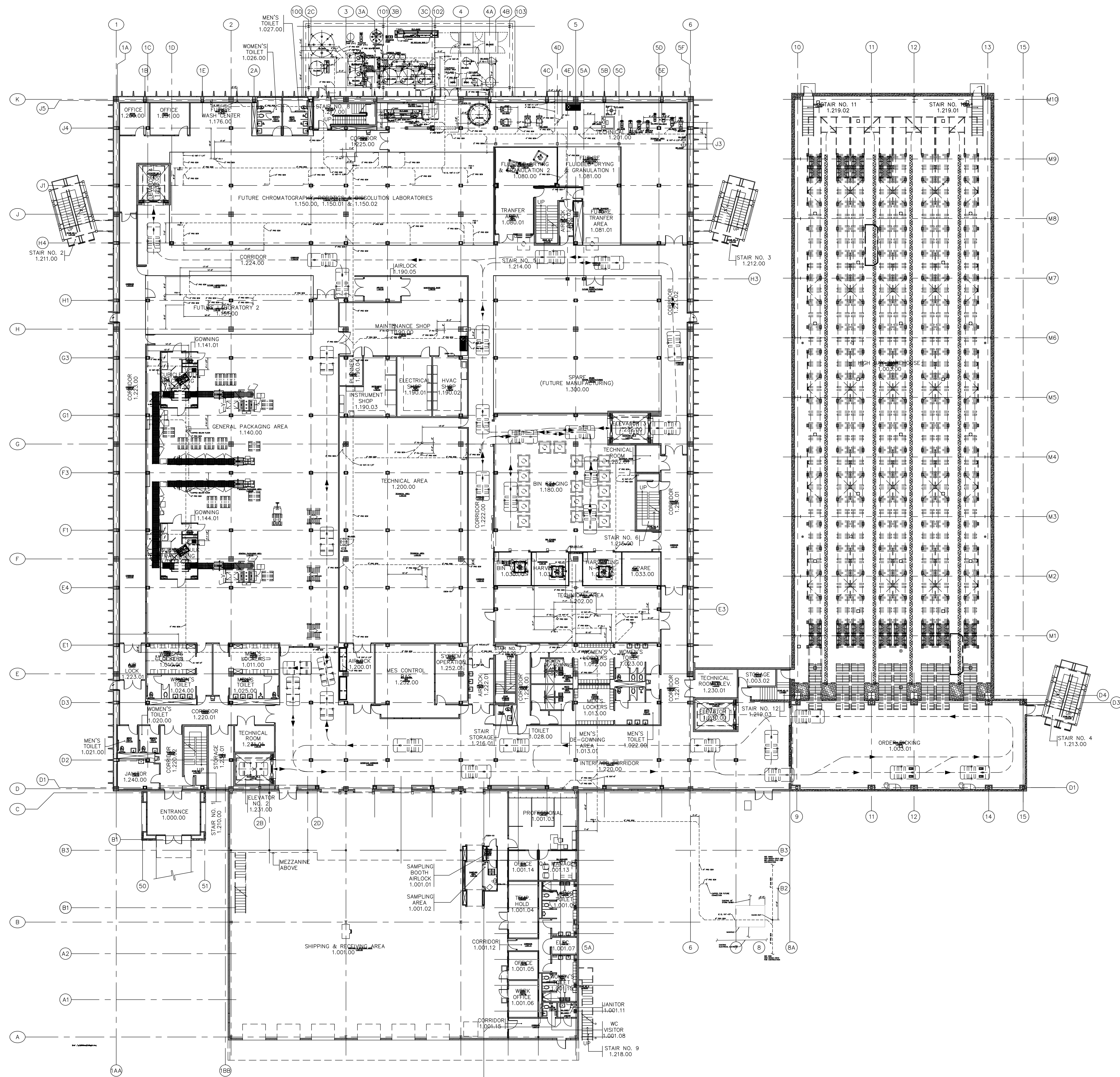
NORTH AMERICAN DRY PRODUCTS STRATEGIC FACILITY  
 PHARMACIA & UPJOHN CARBIE, INC.  
 KM. 60.0, STATE ROAD NO. 2 SABANA HOYOS WARD, ARECIBO PUERTO RICO

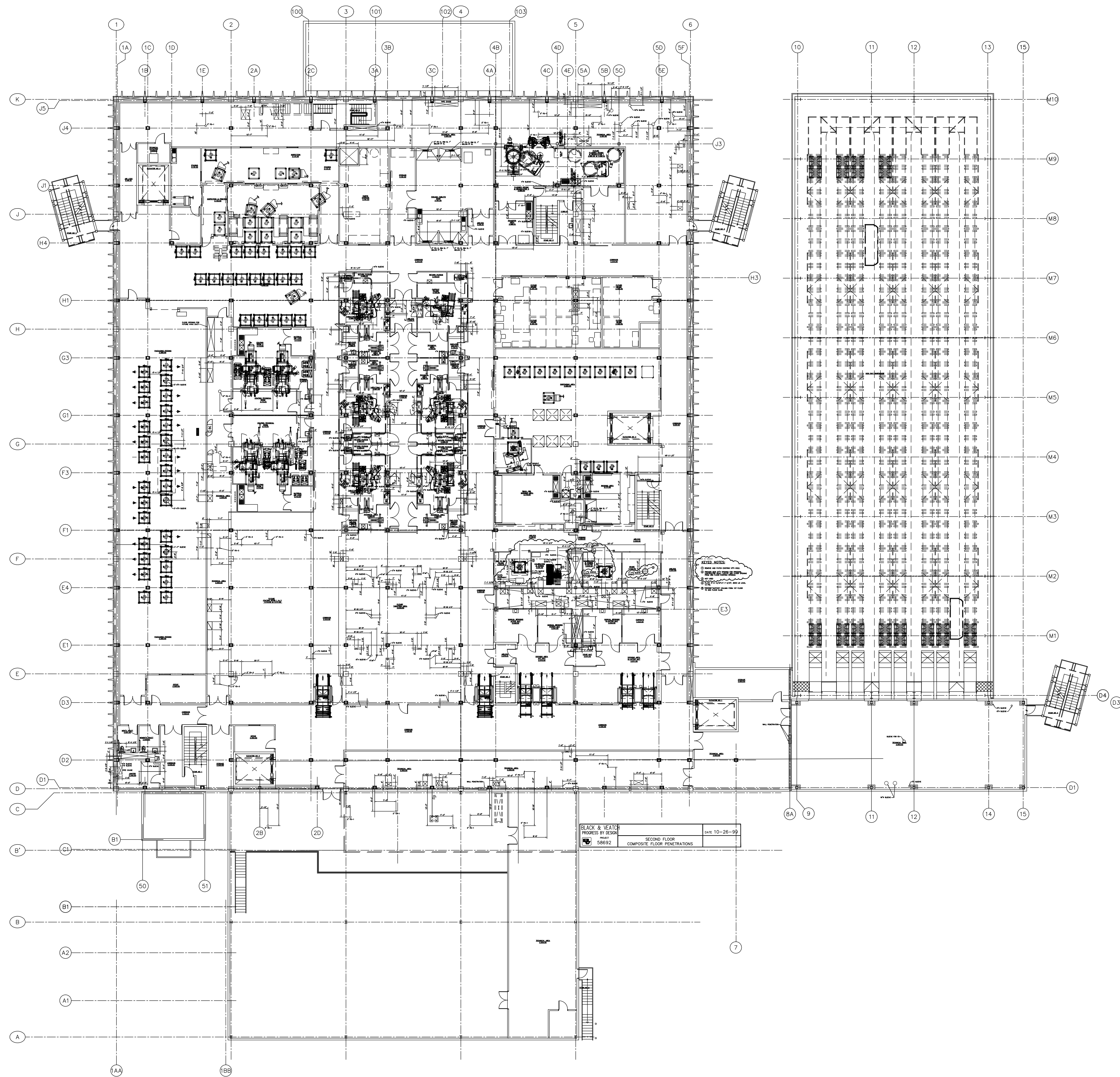
PHARMACIA & UPJOHN CARBIE, INC. DRAWING NUMBER

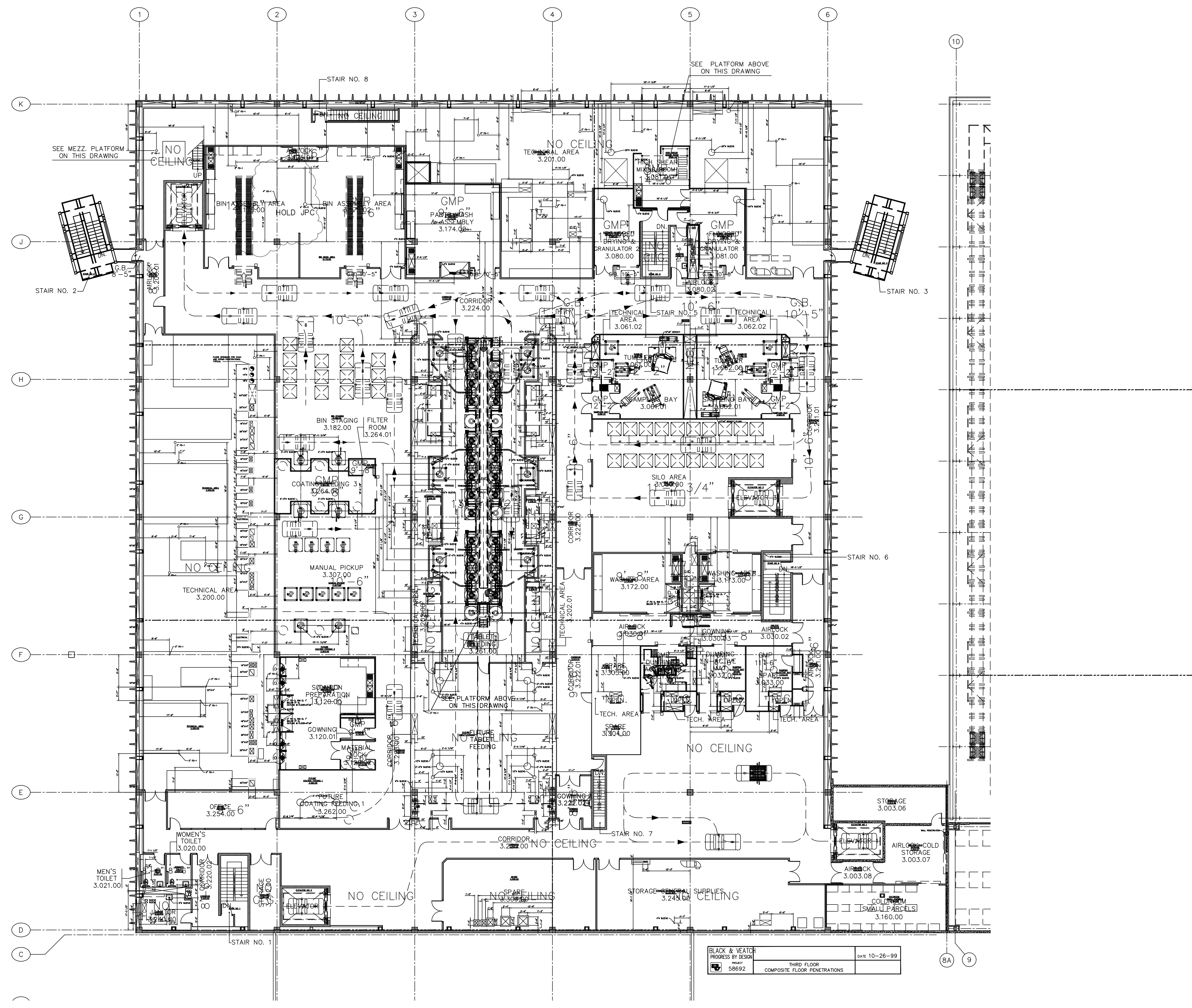
BLDG. NO. PROJECT NO. DRAWING SHT. NO.

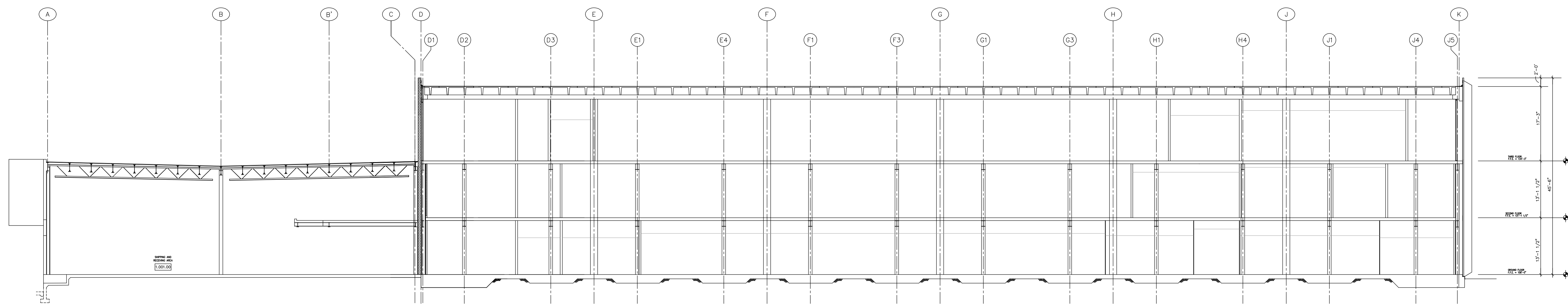
000 - 60024 - 0010.7

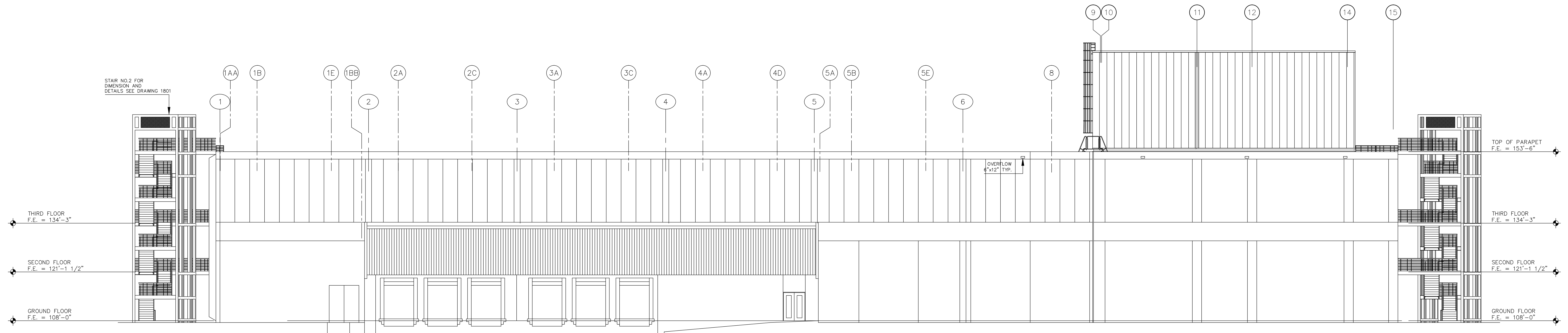
THIS RECORD DOCUMENT HAS BEEN PREPARED BASED ON INFORMATION PROVIDED BY OTHERS. BLACK & VEATCH CORPORATION HAS BEEN ENGAGED TO PROVIDE THIS RECORD DOCUMENT AND HAS NOT VERIFIED THE ACCURACY AND/OR COMPLETENESS OF THIS INFORMATION AND SHALL NOT BE RESPONSIBLE FOR ANY ERRORS OR OMISSIONS WHICH MAY BE INCORPORATED HEREIN AS A RESULT. FUTURE CONSTRUCTION PLANNING SHOULD INCLUDE FIELD CONFIRMATION OF EXISTING CONDITIONS.



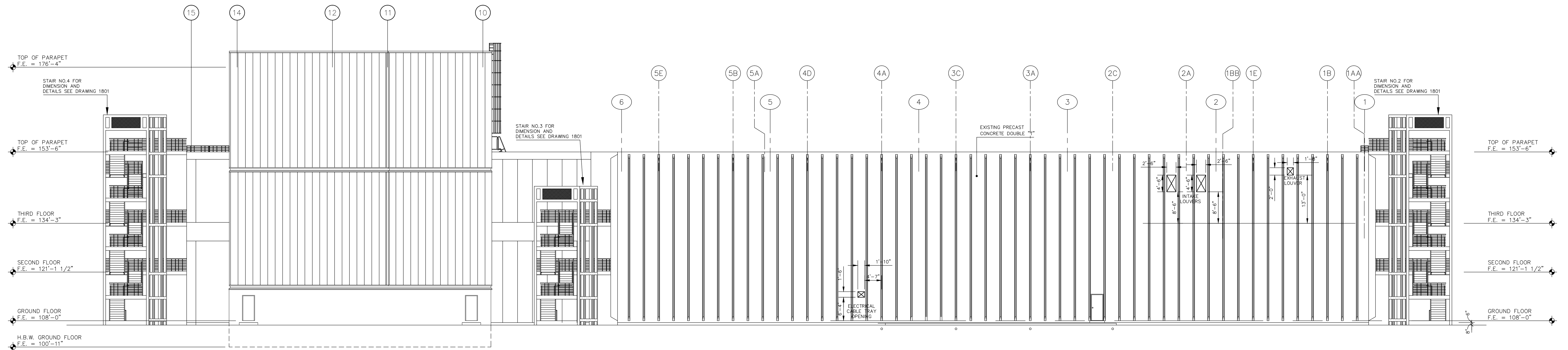




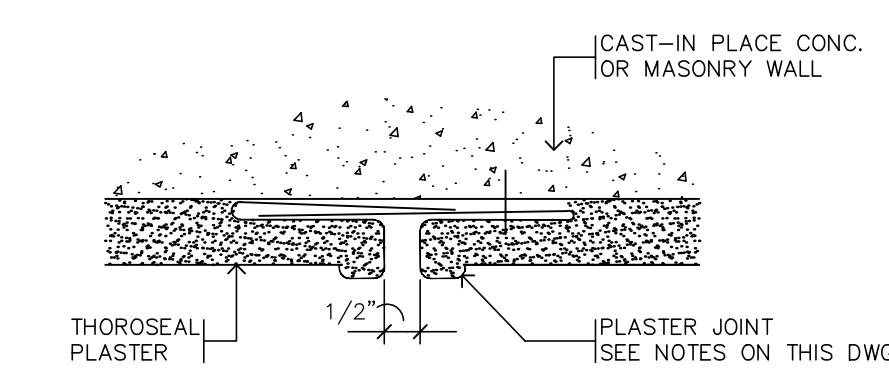




West Elevation  
SCALE : 3/32" = 1'-0"



East Elevation  
SCALE : 3/32" = 1'-0"



- NOTES:
1. EXTERIOR PLASTER JOINTS GROUNDS SHALL BE KEENE NO. 40, ALL ZINC, 1/4" DEEP.
  2. ON ALL PRE-CAST ITEMS THE EXTERIOR FINISH SHALL BE "QUICKSEAL" (SEE SPECS.)

Ornamental joint detail 1  
NOT TO SCALE 1502

FOR REFERENCE ONLY

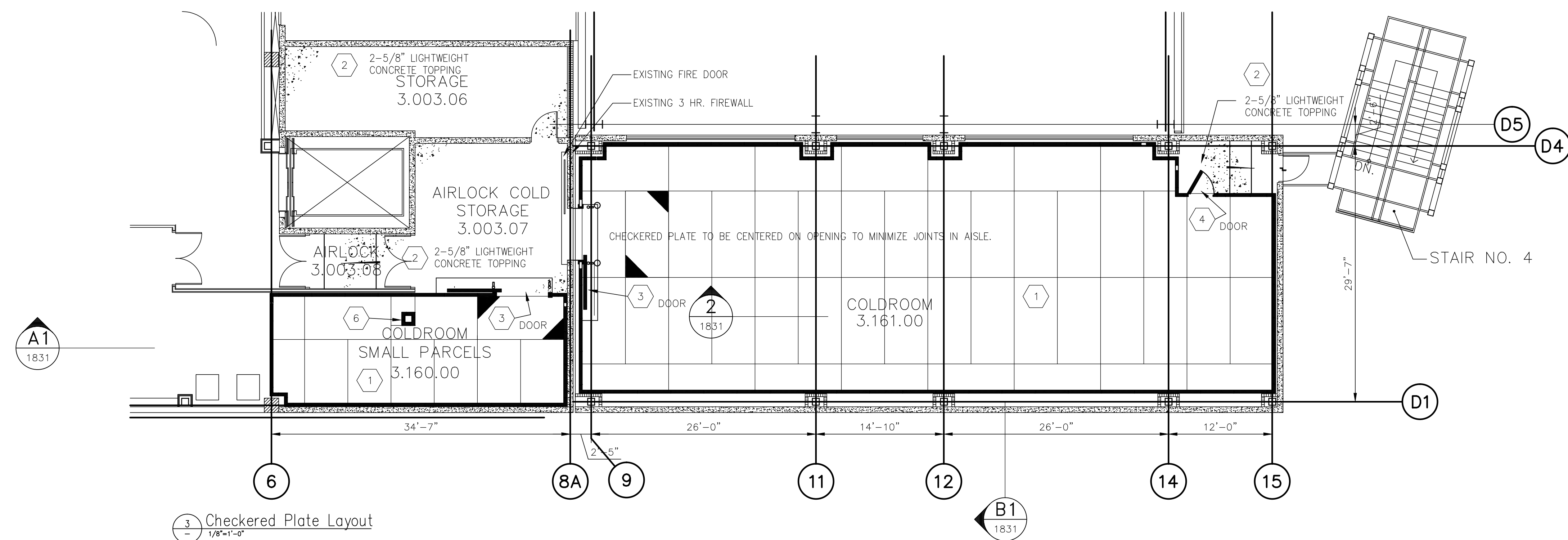
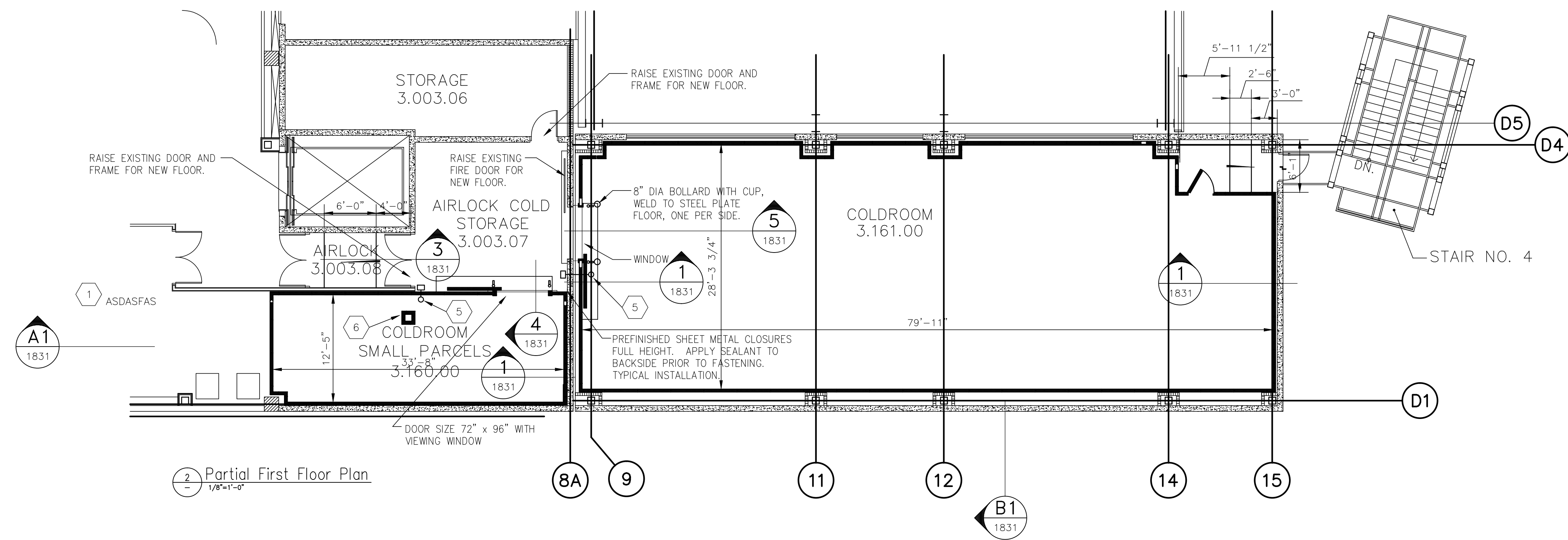
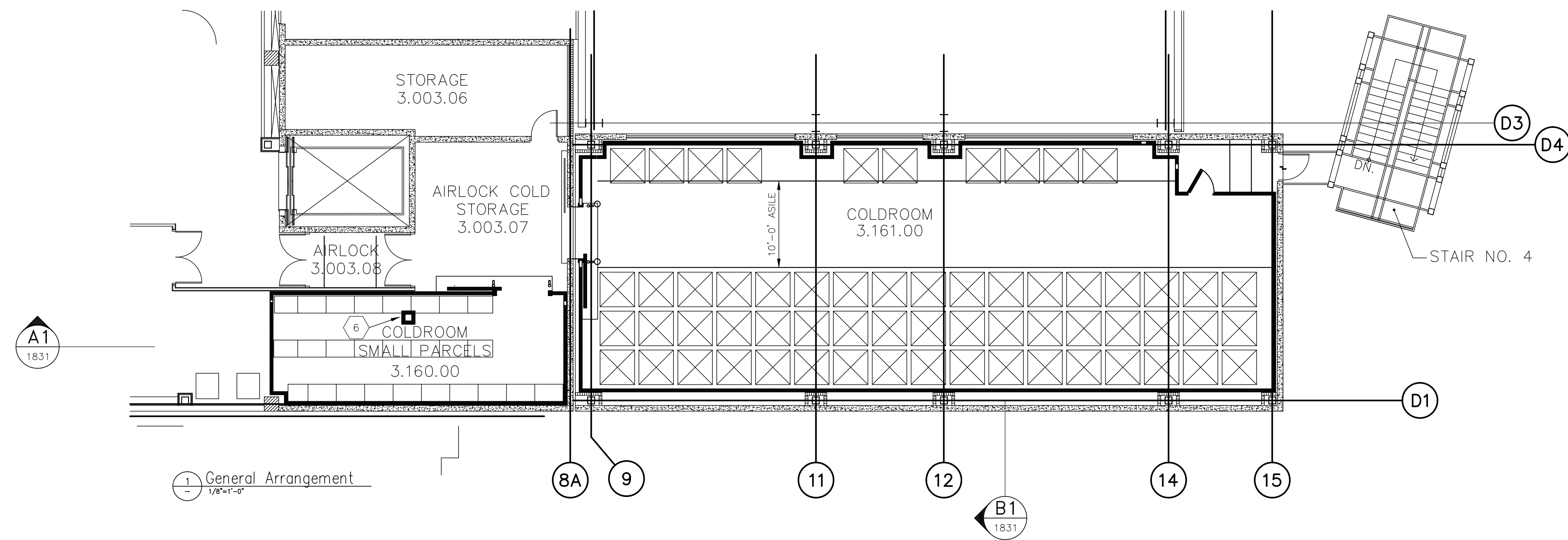
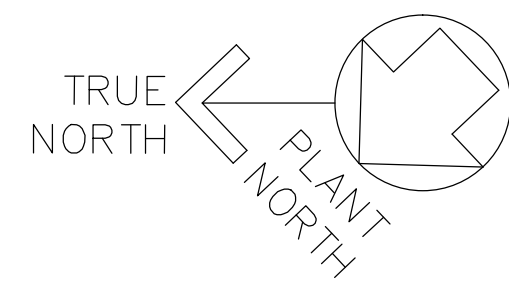
SYM.	DATE	REVISION	BY	APPROV.	SYM.	DATE	REVISION	BY	APPROV.
1									

FILE NAME: 850-60024-1502	SCALE: 3/32" = 1'-0"	DATE DRAWN: 08/27/98
LAST UPDATE: -	DRAWN BY: A.P.S.	P&UC PROJECT NO. CR-6-0024
CHECKED BY: M.D.	DATE:	
APPROVED BY:	DATE:	



TITLE:  
**EAST & WEST ELEVATIONS**  
NORTH AMERICAN DRY PRODUCTS STRATEGIC FACILITY  
PHARMACIA & UPJOHN CARIBE, INC.  
KM. 60.0, STATE ROAD NO. 2 SABANA HOYOS WARD, ARECIBO, PUERTO RICO

PHARMACIA & UPJOHN CARIBE, INC. DRAWING NUMBER		
BLDG. NO.	PROJECT NO.	DRAWING SHT. NO.
850	60024	1502.A



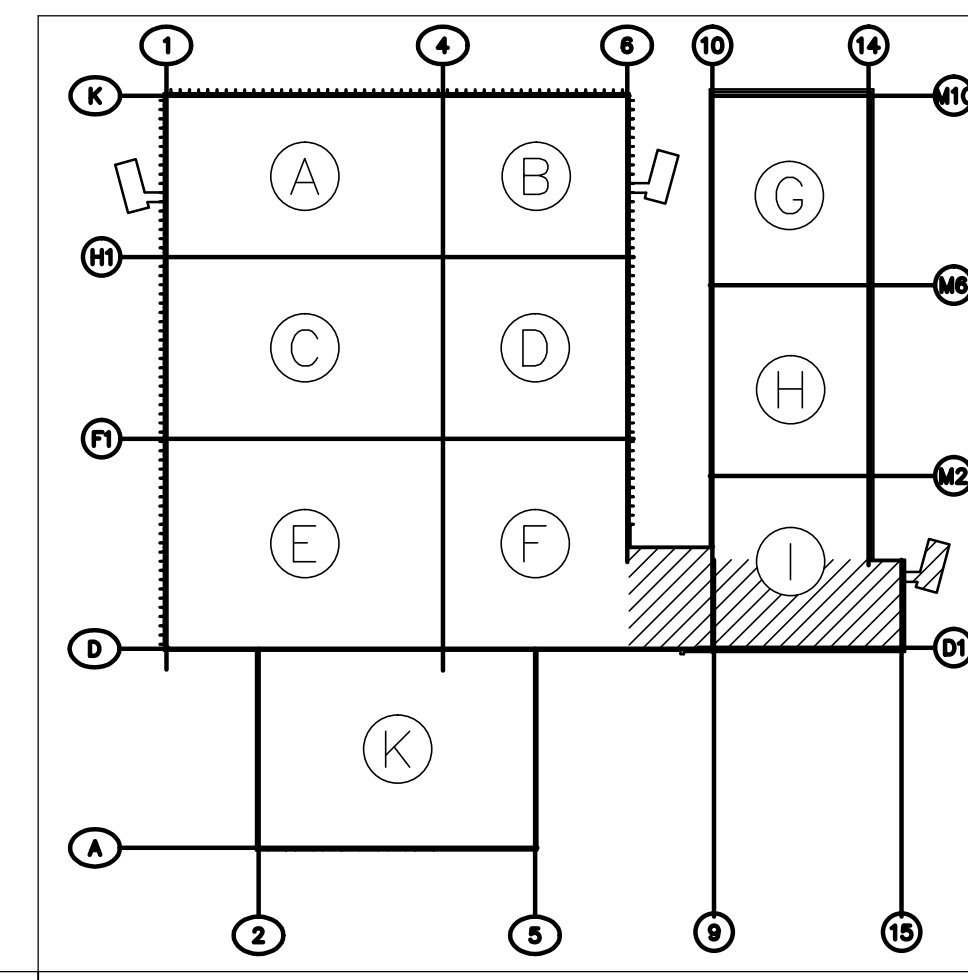
**GENERAL NOTES**

- SEE MECHANICAL DRAWINGS FOR CONDENSING UNIT AND EVAPORATOR LOCATIONS.
- SEE ELECTRICAL DRAWING FOR POWER SUPPLY AND FUTURE LOCATIONS.
- SEE FIRE PROTECTION DRAWING FOR SPRINKLER HEADS, SPRINKLER SYSTEM AND ACCESSORIES BY OTHERS. CONTRACTOR SHALL PROVIDE, COORDINATE AND SEAL SPRINKLER OPENINGS AFTER INSTALLATION.
- CONTRACTOR SHALL PROVIDE SEISMIC SUPPORT STEEL AND FASTENERS FOR EVAPORATORS (UNIT COOLERS) AND CONDENSING UNITS. ALL SUPPORT AND MISCELLANEOUS STEEL SHALL BE PAINTED AND INSULATED IF SURFACE TEMPERATURE WILL CONDENSE WATER IN 58°F DEW POINT ROOM.

**KEY NOTES**

- FLOOR SHALL BE AS CONSTRUCTED PER DETAIL 1 & 2 DWG. 1831 WITH BUTT WELD FLOOR PLATE AND PERIMETER TOE PLATE.
- CONTRACTOR SHALL BUSH HAMMER TO 1/4" PROFILE, LIGHTWEIGHT CONCRETE FILL SHALL HAVE A MINIMUM 28-DAY COMPRESSIVE STRENGTH OF 3,000 PSI, A MAXIMUM CURED UNIT WEIGHT OF 115 POUNDS PER CUBIC FOOT, AND SHALL BE REINFORCED WITH FLAT SHEETS OF WELDED WIRE FABRIC - WWF 6X6/W2.9XW2.9. SURFACES ON WHICH LIGHTWEIGHT CONCRETE FILL IS TO BE PLACED SHALL BE CLEANED OF GREASE, OILS, AND FOREIGN MATTER, INTENTIONALLY ROUGHENED TO A MINIMUM 1/4" PROFILE, AND COATED WITH CONCRETE BONDING COMPOUND. FURTHER SURFACE PREPARATION AND APPLICATION OF BONDING COMPOUND SHALL BE AS RECOMMENDED BY THE MANUFACTURER. PROVIDE CONTROL AND/OR EXPANSION JOINTS DIRECTLY ABOVE SIMILAR JOINTS FOUND IN THE EXISTING SLAB.
- AUTOMATIC SINGLE SLIDING DOOR SHALL HAVE ELECTRIC OPERATOR WITH INSIDE AND OUTSIDE OVERHEAD PULL SWITCH, VIEWING WINDOW, MANUAL RELEASE FOR MANUAL OPENING, AND SAFETY EDGE. DOOR SHALL HAVE BRUSHED CHROME HARDWARE, INSULATED EQUAL TO PANELS, 0.075" THICK STUCCO - EMBOSSED ALUMINUM DOOR BAKED ON FINISH, 18 GAUGE REINFORCED STAINLESS STEEL, JAMB AND HEAD FRAMES, AND LOCKABLE.
- EXIT DOOR SHALL BE PROVIDED WITH VIEWING WINDOW, HARDWARE, 18 GAUGE REINFORCED STAINLESS STEEL FRAME AND 0.075" THICK STUCCO - EMBOSSED ALUMINUM DOOR WITH BAKED ON FINISH.
- PROVIDE DIGITAL THERMOMETER AND RECORDER WITH REMOTE SPACE SENSOR.
- PROVIDE TWO 3/4" LAPPED OF ARMFLEX INSULATION AT COLUMN FROM FLOOR TO CEILING WITH TWO COATS OF MANUFACTURES WHITE FINISH PAINT.

THIS RECORD DOCUMENT HAS BEEN PREPARED BASED ON INFORMATION PROVIDED BY OTHERS. BLACK & VEATCH CORPORATION HAS BEEN CONTRACTED TO PROVIDE THIS RECORD DOCUMENT AND HAS NOT VERIFIED THE ACCURACY AND/OR COMPLETENESS OF THIS INFORMATION AND SHALL NOT BE RESPONSIBLE FOR ANY ERRORS OR OMISSIONS WHICH MAY BE INCORPORATED HEREIN AS A RESULT. FUTURE CONSTRUCTION PLANNING SHOULD INCLUDE FIELD CONFIRMATION OF EXISTING CONDITIONS.



SYM.	DATE	REVISION	BY	APPROV.	SYM.	DATE	REVISION	BY	APPROV.
0	6-9-00	ISSUED FOR BIDS - PACKAGE 4R	FWS	JCR					
1	3-5-02	CONFORMED TO CONSTRUCTION DOCUMENTS	PRP	JCR					

FILE NAME: 8501830	SCALE: 1/8"=1'-0"	DATE DRAWN: 4-7-00
LAST UPDATE: 3-1-02	DRAWN BY: FWS	P&C PROJECT NO. 60024
medicine...designed for health...produced with care	CHECKED BY: FWS	DATE: 4-7-00
	APPROVED BY: JCR	DATE: 6-9-00



TITLE:  
**COOLER FLOOR PLANS  
THIRD FLOOR**

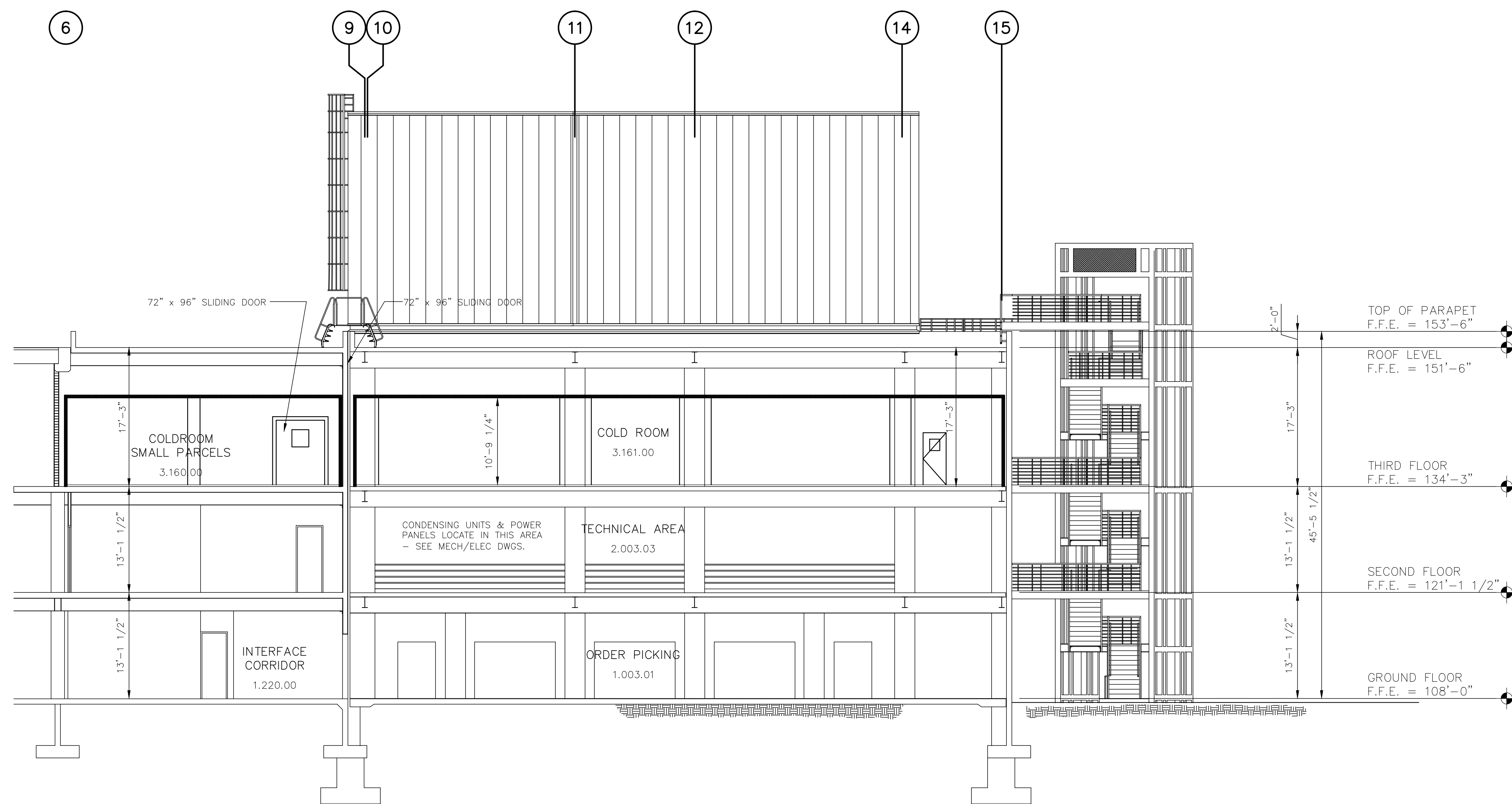
NORTH AMERICAN DRY PRODUCTS STRATEGIC FACILITY  
PHARMACIA & UPJOHN CARIBE, INC.  
KM. 60.0, STATE ROAD NO. 2 SABANA HOYOS WARD, ARECIBO, PUERTO RICO

PHARMACIA & UPJOHN CARIBE, INC. DRAWING NUMBER

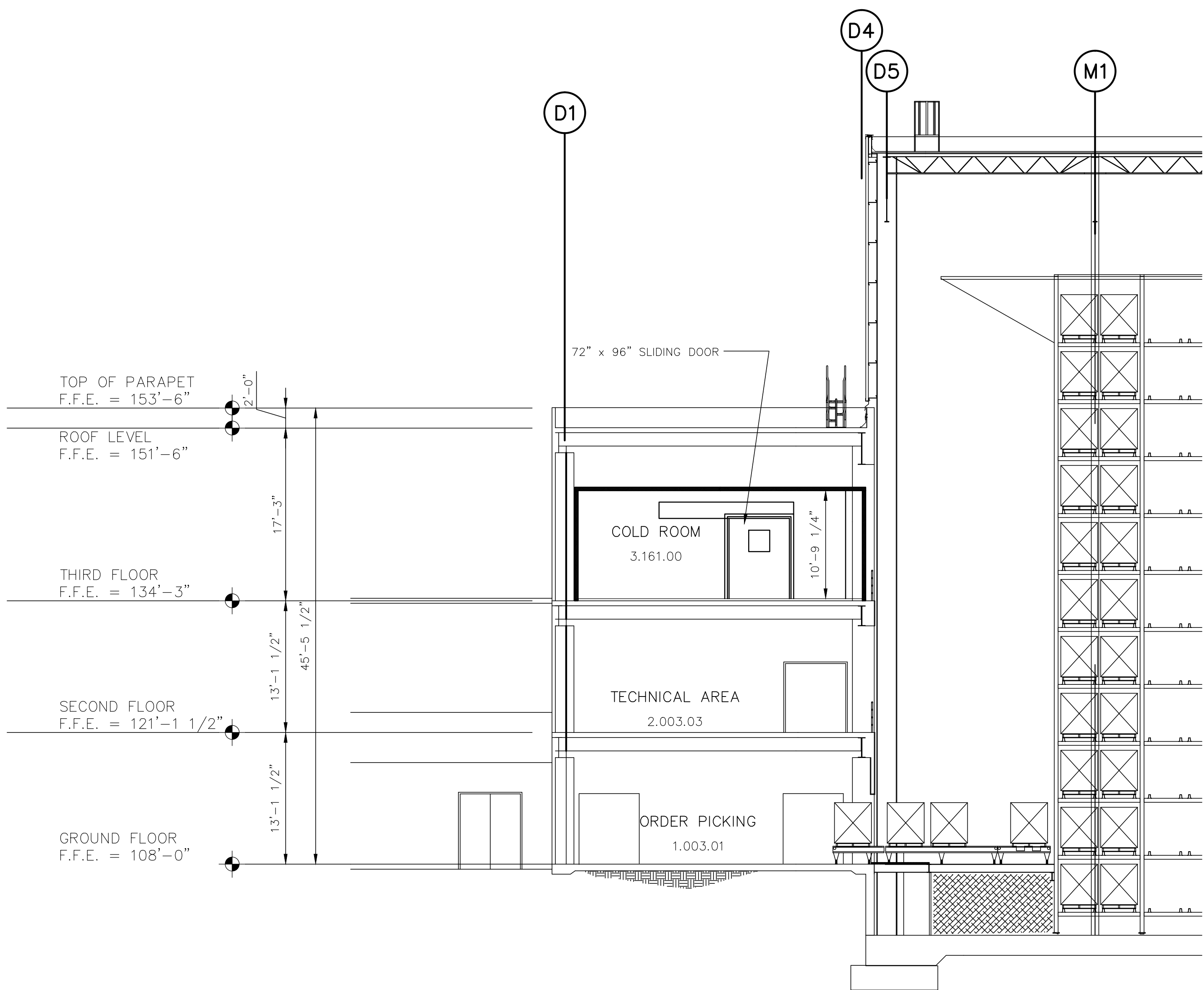
BLDG. NO. PROJECT NO. DRAWING SHT. NO.

850 - 60024 - 1830.1

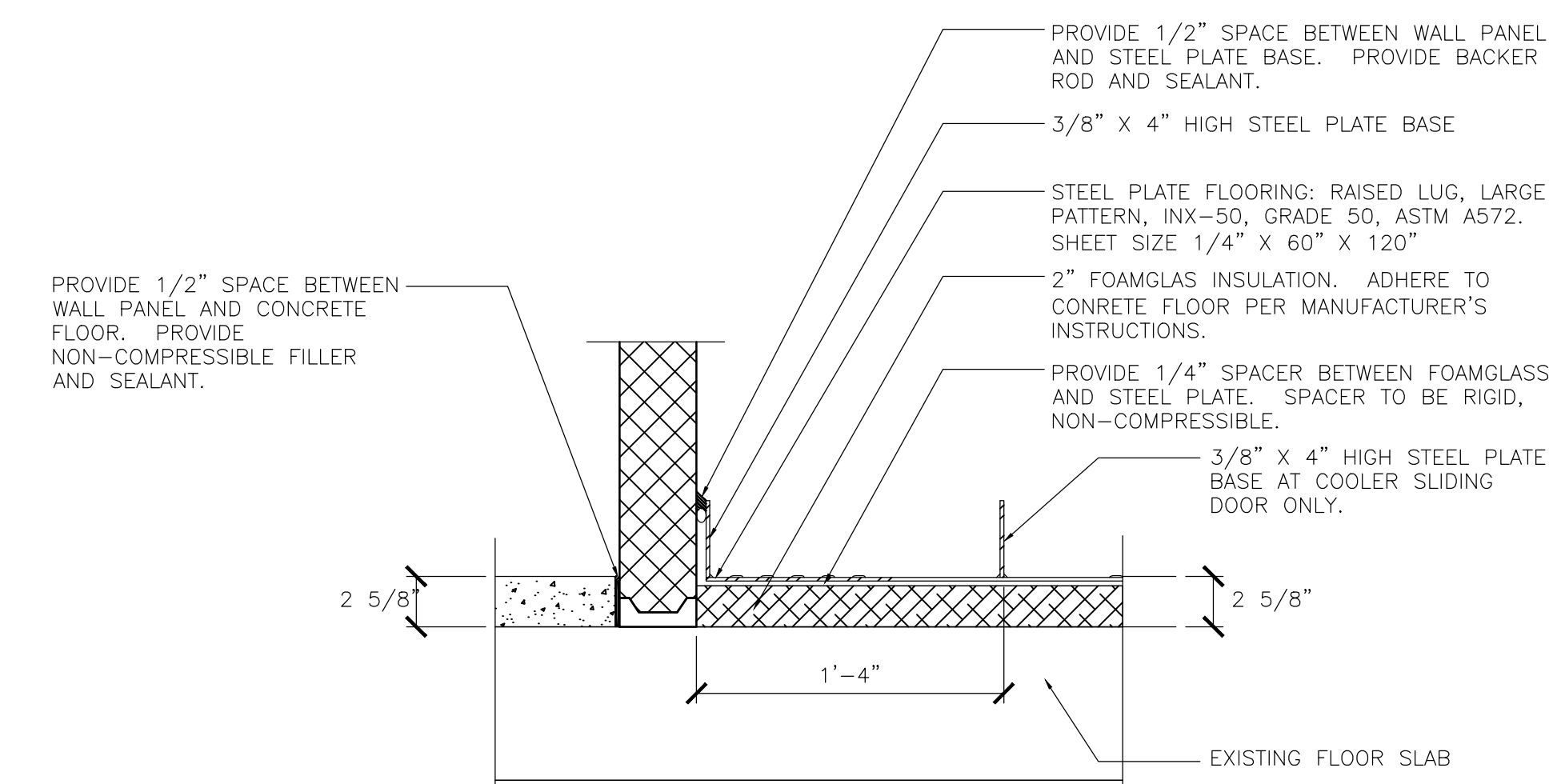




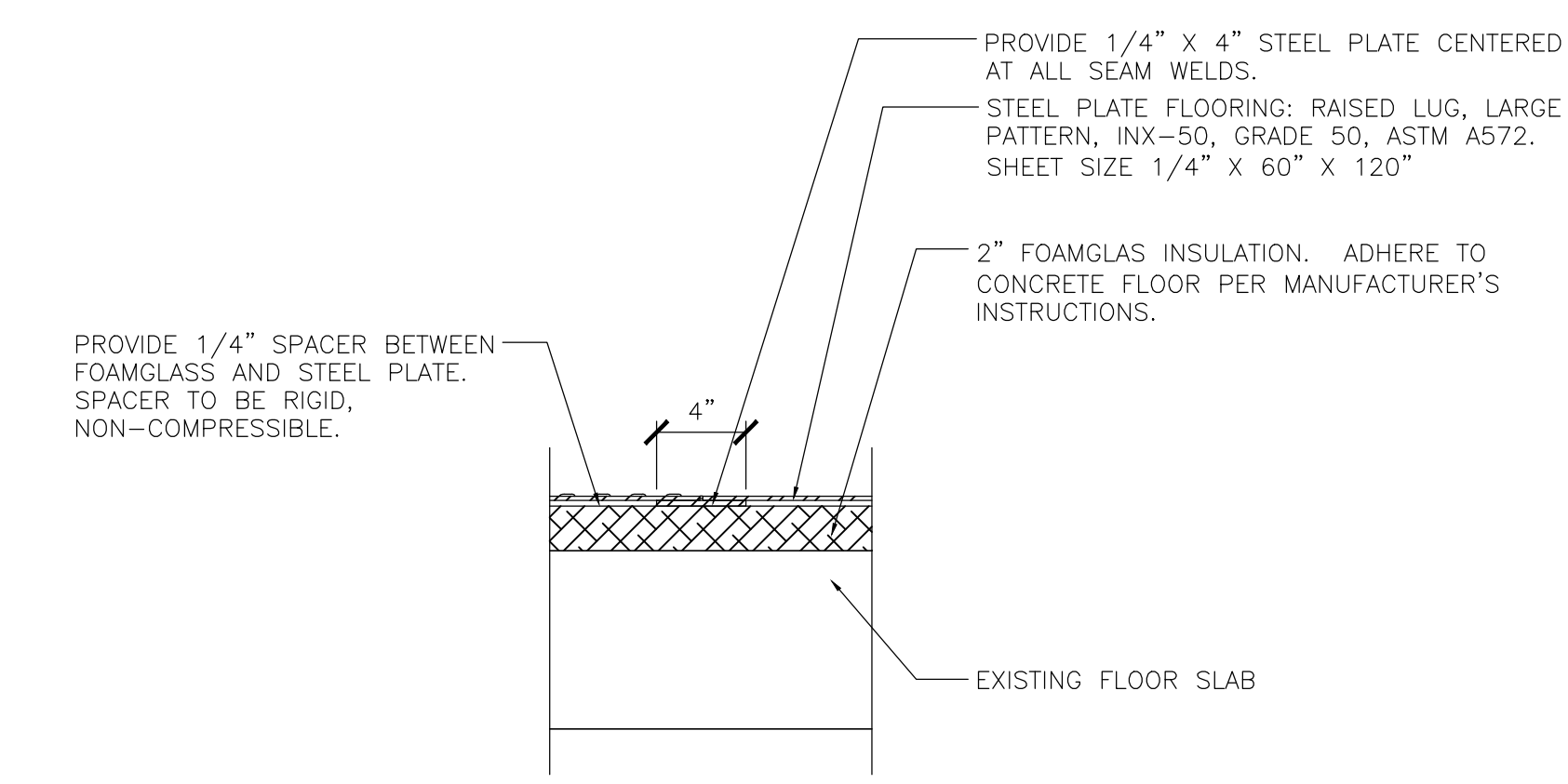
**SECTION A1**  
SCALE: 1/8"=1'-0"  
1830



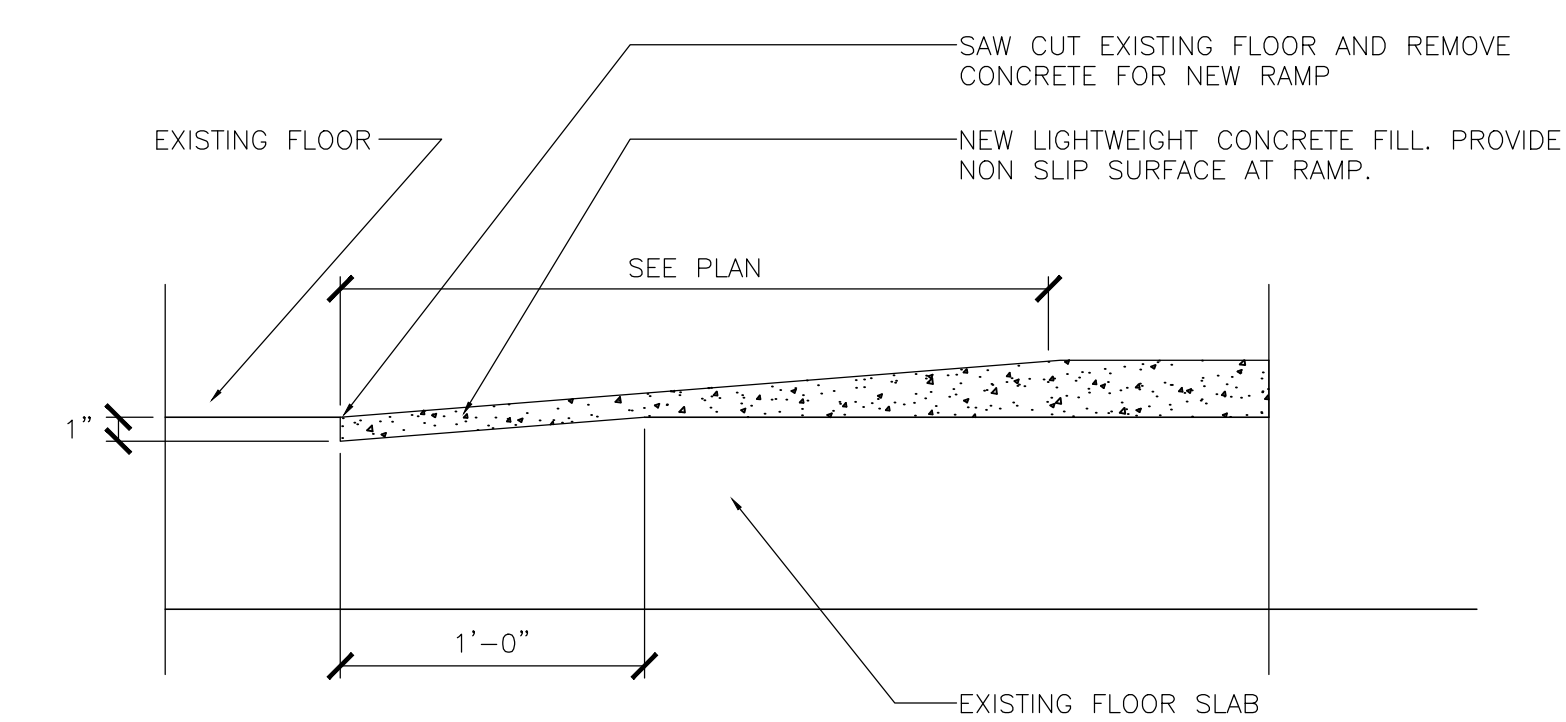
**SECTION B1**  
SCALE: 1/8"=1'-0"  
1830



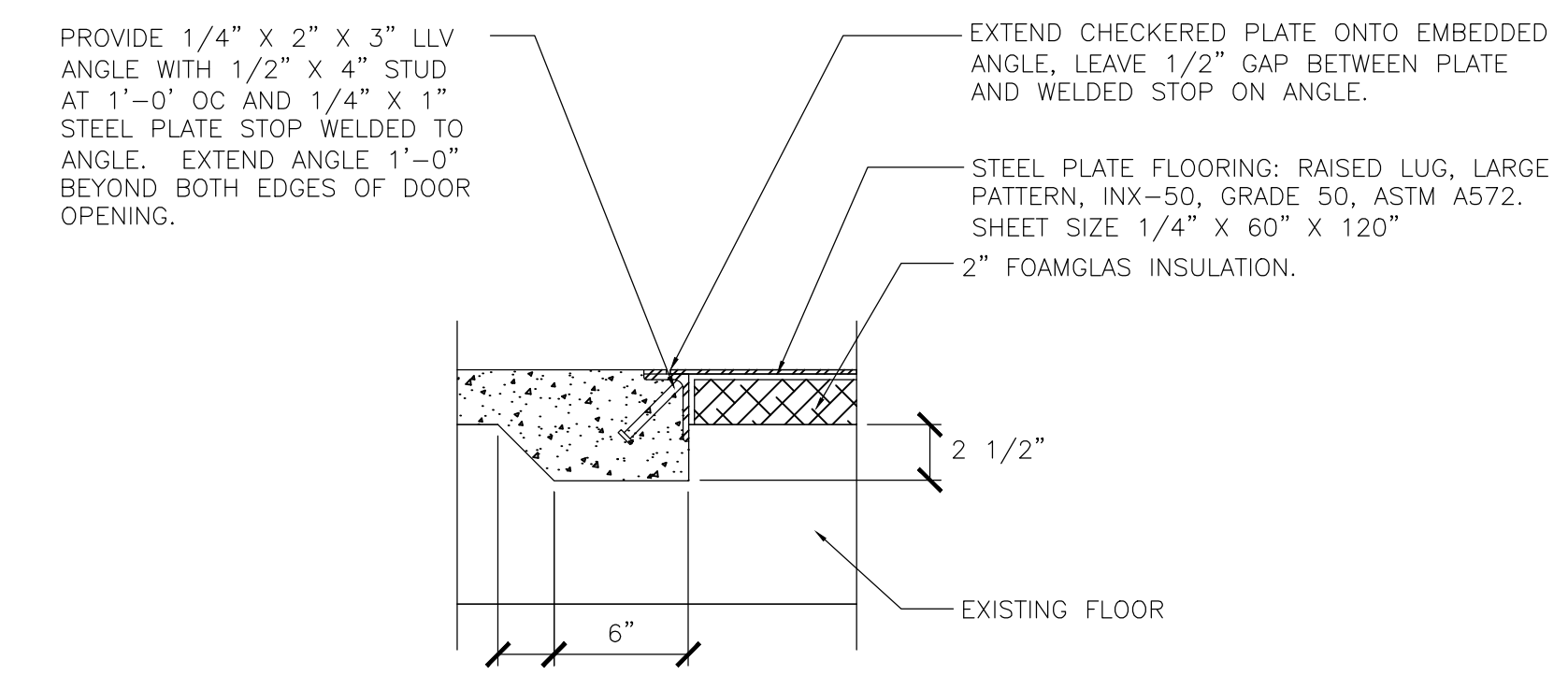
**1 DETAIL**  
1830 1 1/2"=1'-0"



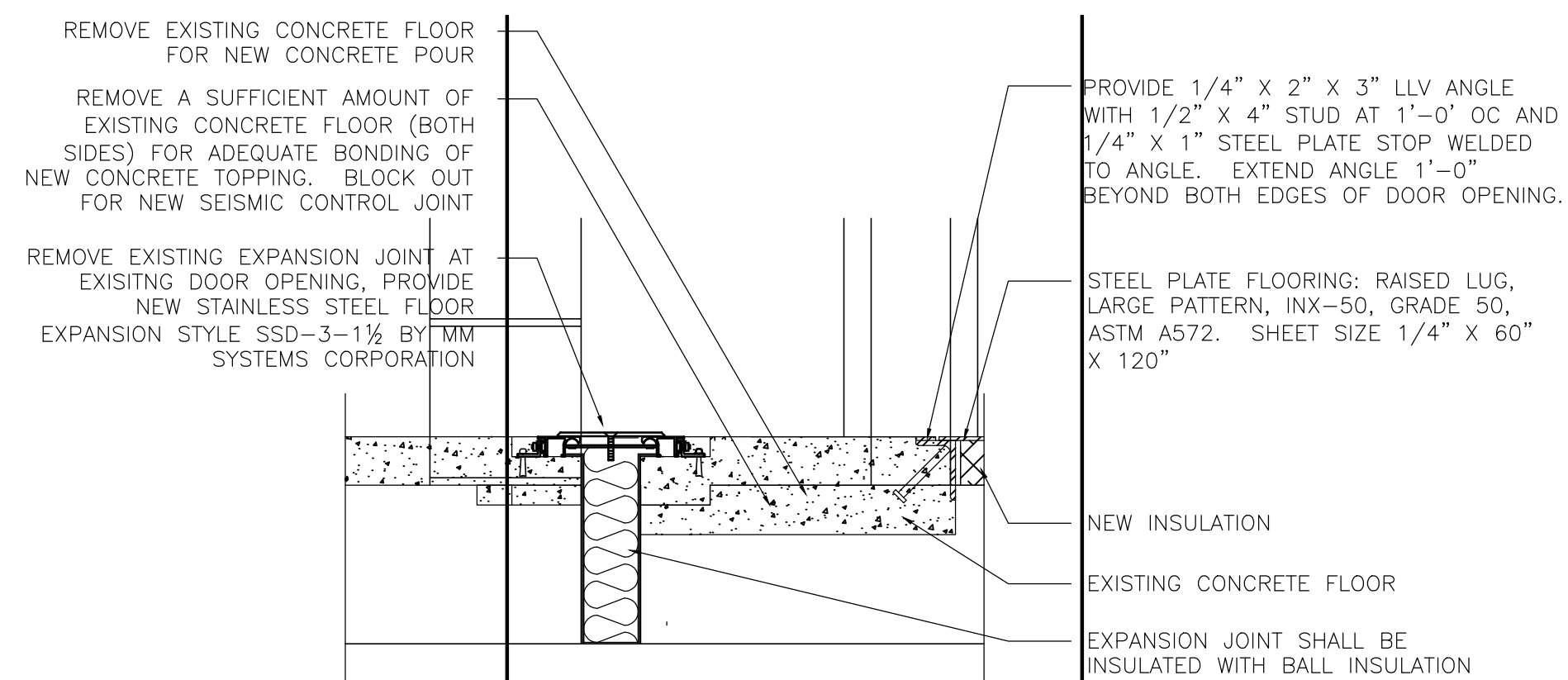
**2 DETAIL**  
1830 1 1/2"=1'-0"



**3 DETAIL**  
1830 1 1/2"=1'-0"



**4 DETAIL**  
1830 1 1/2"=1'-0"



**5 DETAIL**  
1830 1 1/2"=1'-0"

THIS RECORD DOCUMENT HAS BEEN PREPARED BASED ON INFORMATION PROVIDED BY OTHERS. BLACK & VEATCH CORPORATION HAS BEEN CONTRACTED TO PROVIDE THIS RECORD DOCUMENT AND HAS NOT VERIFIED THE ACCURACY AND/OR COMPLETENESS OF THIS INFORMATION AND SHALL NOT BE RESPONSIBLE FOR ANY ERRORS OR OMISSIONS WHICH MAY BE INCORPORATED HEREIN AS A RESULT. FUTURE CONSTRUCTION PLANNING SHOULD INCLUDE FIELD CONFIRMATION OF EXISTING CONDITIONS.

SYM.	DATE	REVISION	BY	APPROV.	SYM.	DATE	REVISION	BY	APPROV.
0	6-9-00	ISSUED FOR BIDS - PACKAGE 4R	FWS	JCR					
1	3-5-02	CONFORMED TO CONSTRUCTION DOCUMENTS	PRP	JCR					

FILE NAME: 8501831	SCALE: 1/8"=1'-0"	DATE DRAWN: 4-7-00
LAST UPDATE: 3-1-02	DRAWN BY: FWS	PAUC PROJECT NO.: 60024
medicine...designed for health...produced with care	CHECKED BY: FWS	DATE: 4-7-00
	APPROVED BY: JCR	DATE: 6-9-00



TITLE:  
**COOLER BUILDING SECTIONS DETAILS**  
NORTH AMERICAN DRY PRODUCTS STRATEGIC FACILITY  
PHARMACIA & UPJOHN CARIBE, INC.  
KM. 60.0, STATE ROAD NO. 2 SABANA HOYOS WARD, ARECIBO, PUERTO RICO

PHARMACIA & UPJOHN CARIBE, INC. DRAWING NUMBER  
BLDG. NO. PROJECT NO. DRAWING SHT. NO.  
850 - 60024 - 1831.1