

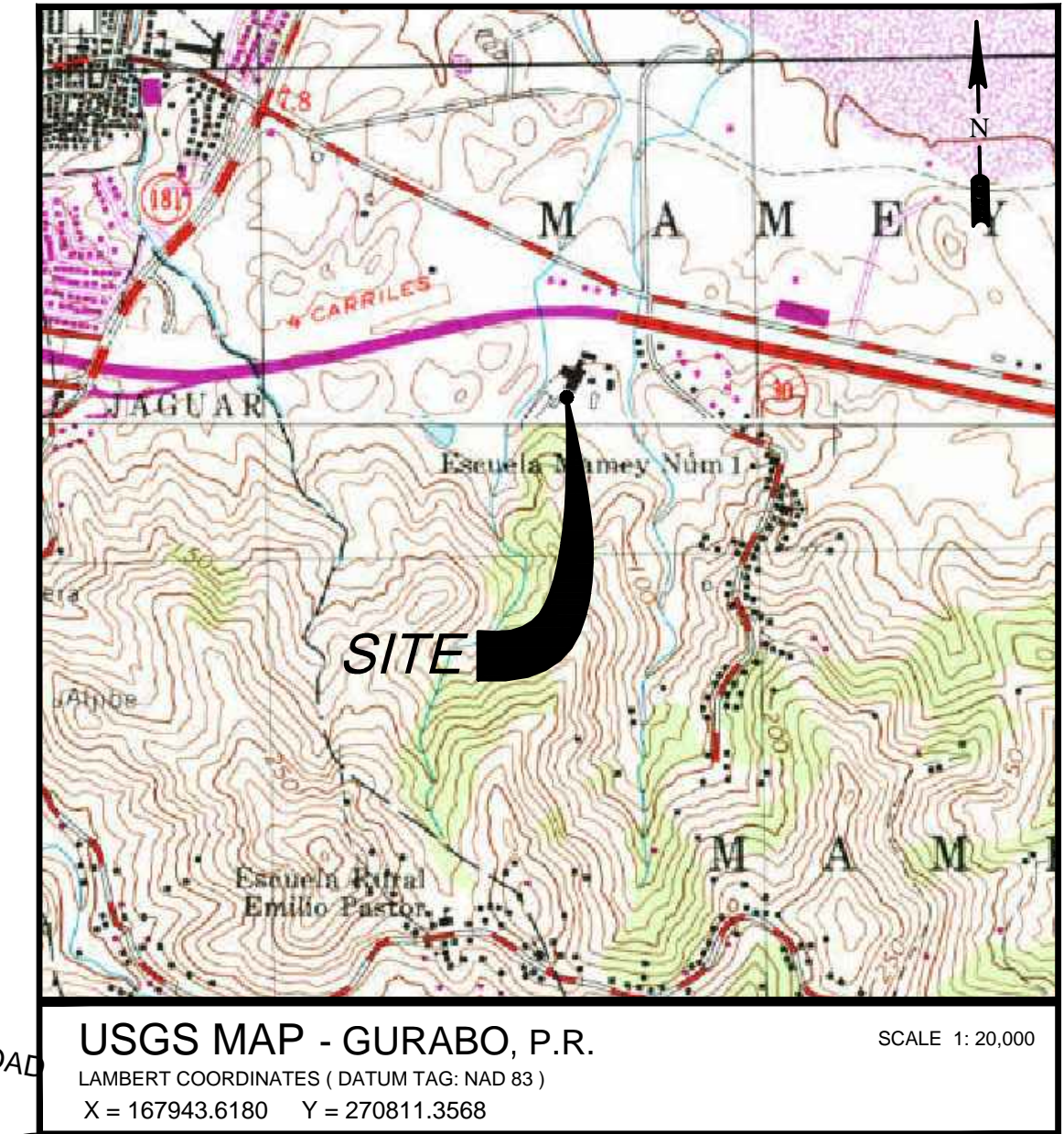
SITE DATA

BUILDING #1

INDUSTRIAL BUILDING #1 100,000 Sq.ft.
 PARKINGS PROVIDED: 133
 GAS STATION 3,500 Sq.ft.
 FAST FOODS 9,400 Sq.ft.

BUILDING #2

INDUSTRIAL BUILDING #2 200,000 Sq.ft.
 PARKINGS PROVIDED: 266



USGS MAP - GURABO, P.R. SCALE 1:20,000
 LAMBERT COORDINATES (DATUM TAG: NAD 83)
 X = 167943.6180 Y = 270811.3568



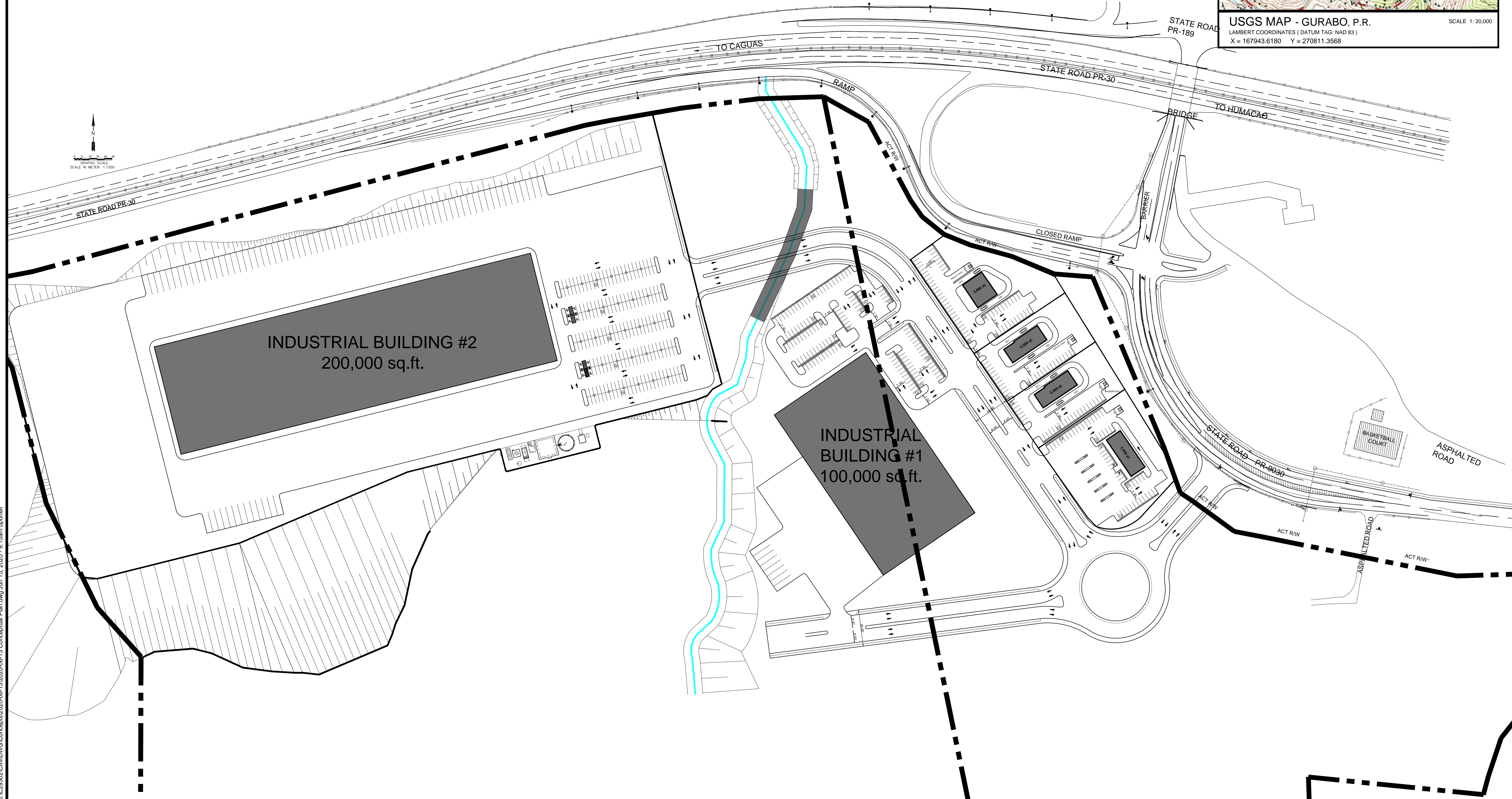
www.cphcorp.com

**A Full Service
A & E Firm**

Architects
 Engineers
 Landscape Architects
 M / E / P
 Planners
 Structural
 Surveyors
 Traffic / Transportation
 Development Coordination

Offices in:
 • Florida
 • Puerto Rico
 • Connecticut
 • Maryland
 • Texas

CARLOS J. SANCHEZ, P.E.
 LIC. #18787



By	Revision	Date	No.
			1
			2
			3
			4
			5
			6
			7
			8
			9
			10

Designed by: H.R.S.
 Drawn by: R.M.R.
 Checked by: C.S.G.
 Approved by: C.S.G.
 Scale: 1:1250
 Date: JUN/20
 Job No.: C29302
 © 2020

Plans Prepared By:
CPH, PSC
 950 Ponce De Leon Ave
 San Juan, PR 00907
 Ph: 787.641.1992

CONCEPTUAL PLAN
CSM GURABO INDUSTRIAL PARK
 STATE ROAD PR-30 INT. PR-9030
 MAMEY WARD
 MUNICIPALITY OF GURABO, PUERTO RICO.

Sheet No.
SK-1

J:\C29302\Civil\DWG\Concepts\2020-06-13\2020-06-13 Conceptual Plan.dwg Jun 15, 2020 - 9:15am bporrell